

HIE 3.0 – The Future of Interoperability

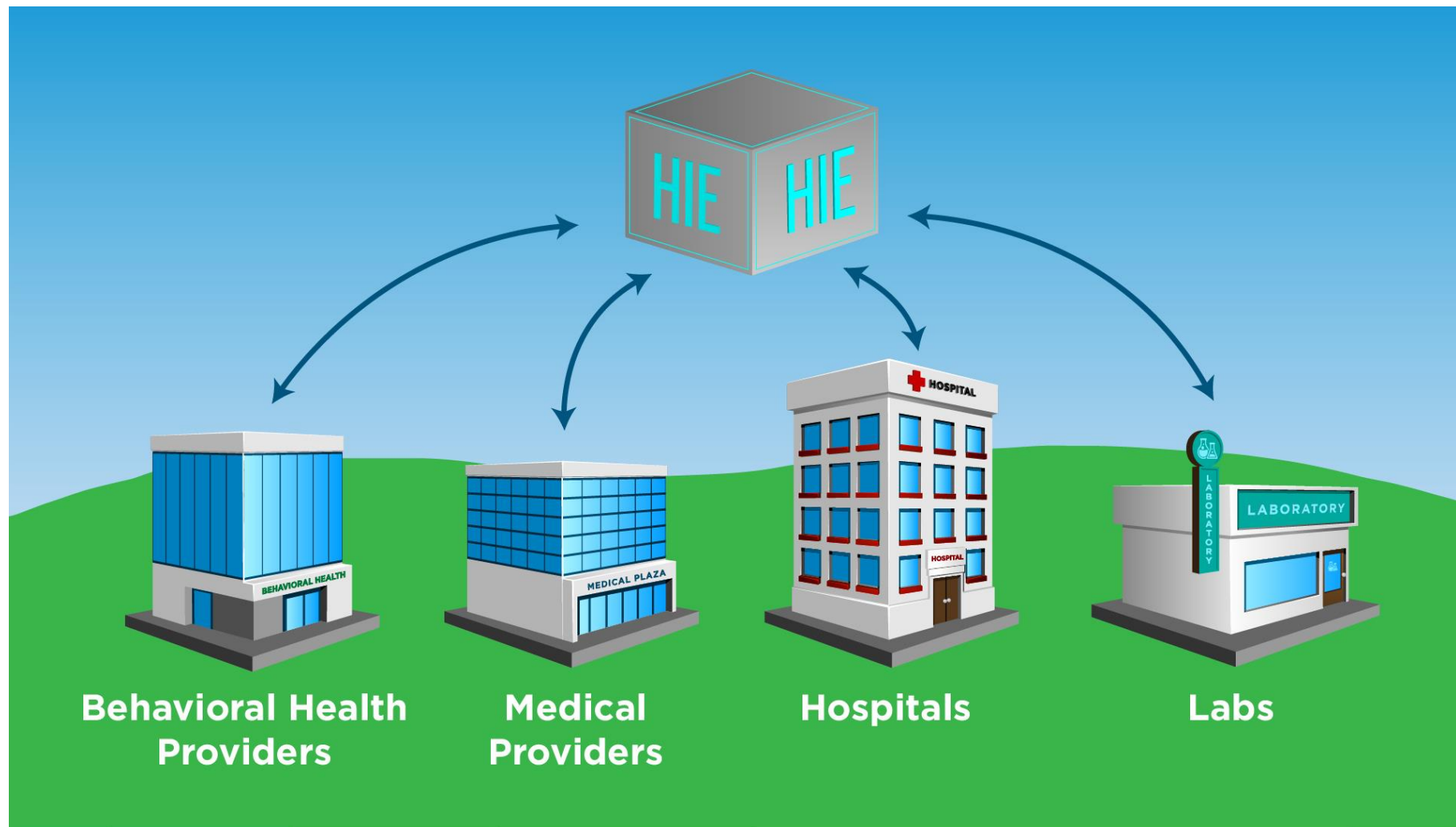
Melissa A. Kotrys, MPH
Chief Executive Officer

Connecting Michigan Conference
March 2021

Questions to Ponder for HIE 3.0

- What challenges are still holding us back from leveraging technology and interoperability opportunities in healthcare delivery? In public health?
- What additional data sets can be included in HIE to support improving individual and community health and wellness?
- How are HIEs adjusting and changing as the healthcare industry continues to evolve, both pre and post pandemic?
- What does the future of interoperability look like post COVID-19?

Health Information Exchange



What We Are & What We Do

- A **public-private partnership** that improves health and wellness by advancing the secure and private sharing of electronic health information.
- A **Data Trustee** for the Arizona healthcare community.
- Manage and operate Arizona's **health information exchange** (HIE), by providing **secure access to & exchange of** patient health information for Arizona's healthcare community.

Who is Health Current?

858

HIE Participants and growing
as of 2/19/2021

Data available on **12+ million**

2,202 Active Portal Users

237 Data Sources

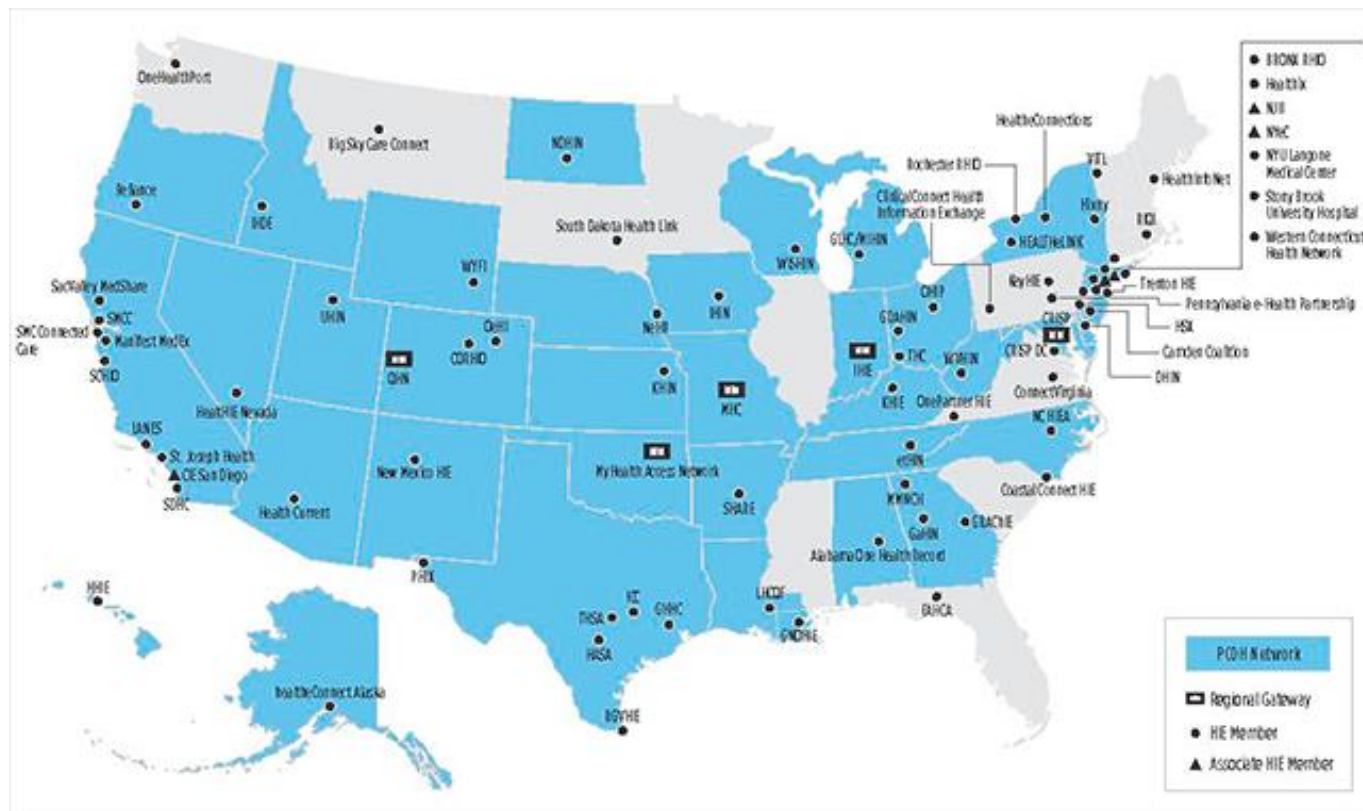
91K Patient Records accessed monthly

10+M Alerts delivered monthly



HIEs Nationwide

Providing health data on more than 90% of Americans



Evolving to HIE 3.0



- Increasing EHR Adoption
- HIE & Interoperability
- E-Prescribing
- Privacy & Security

Pre 2010



- ARRA/HITECH
- Meaningful Use
- EHR Adoption Explodes
- Population Health & Analytics

2010 to 2020

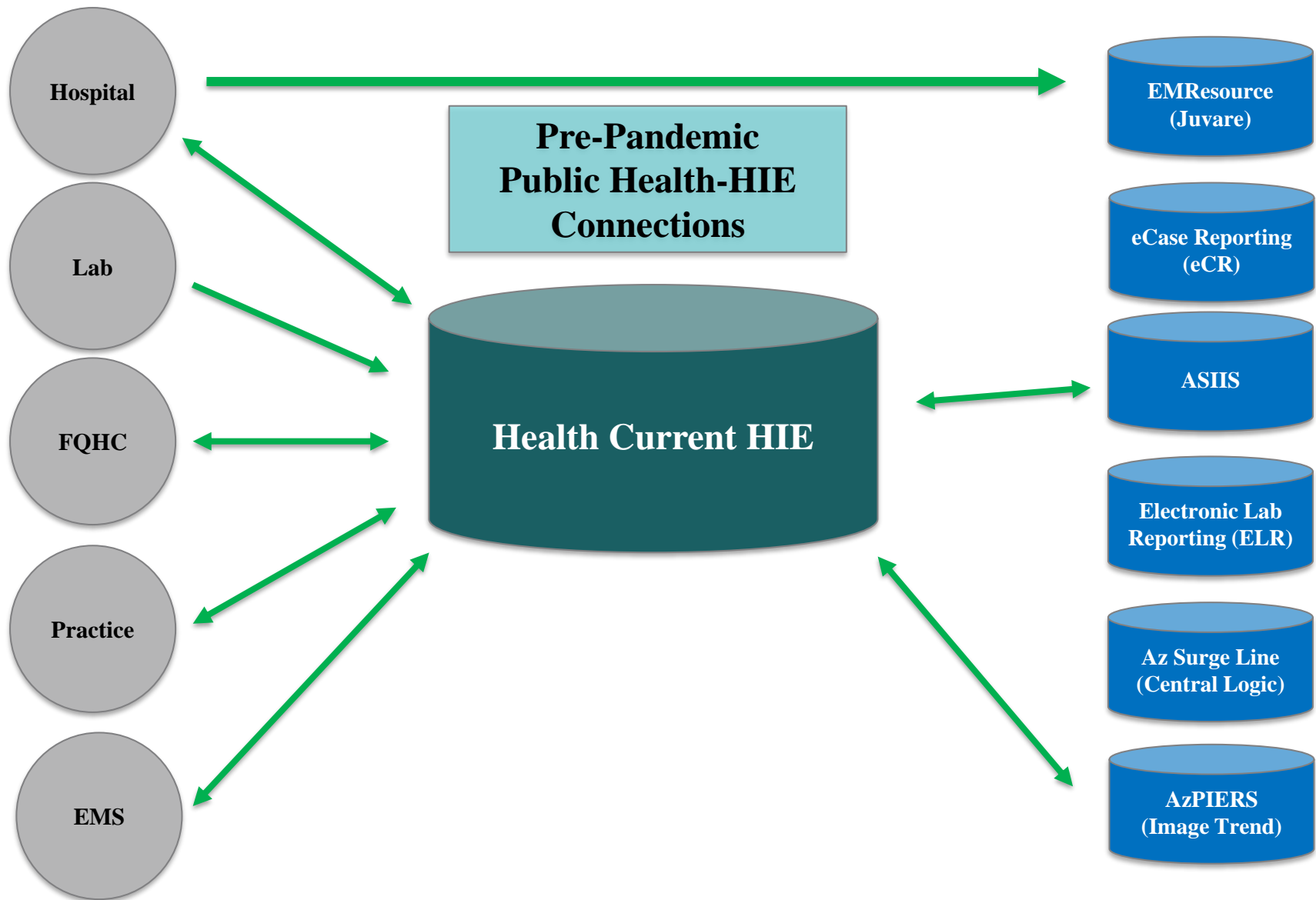


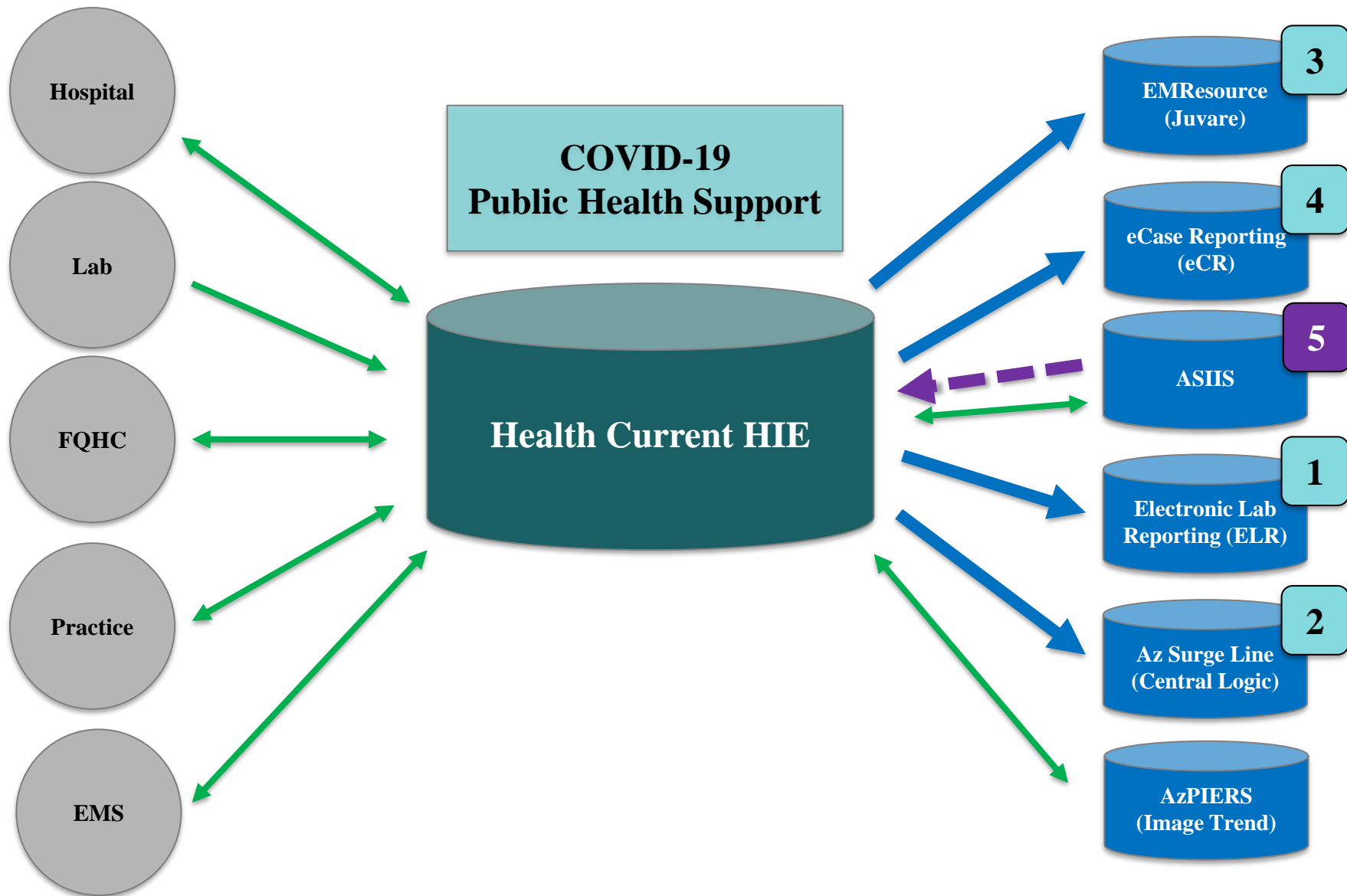
- Pandemic
- Public Health
- No Info Blocking, Patient Access & TEFCA
- HIE Regionalization
- Health Data Utilities

2020 & Beyond

Pandemic Recovery & Public Health Focus







CentralLogic

Right Care. Right Location. Without Delay.

Bed Visibility (System)

Version 2020.05

Global Filters

Region

All

Facility

All

Level Of Care

All

Clinical Group

All

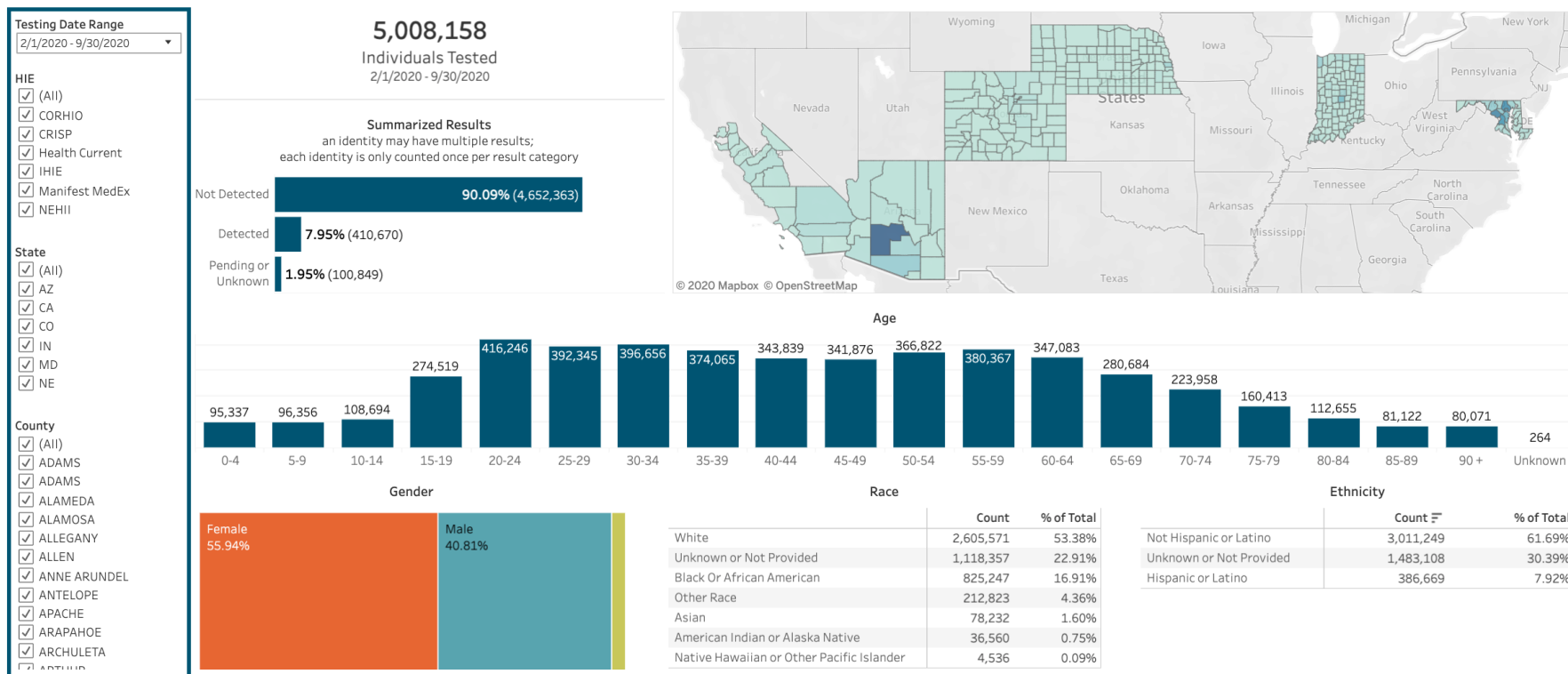
Region	Facility	ICU		PCU		MedSurg		Obs		Peds	
		Gen		Gen		Gen		Gen	Obs	Gen	ICU
Central		3		50		54			32		
		54		170		81			17		
		9		18					23	4	
		42		57		35			49		
		25		45		61			8	16	7
		4		16		20			15		
		2		21		10			20		
						8					
		19		38					15		
		0		9					3	7	
	4		9					3			
	17		97		54			8	21	9	
	33		34		47			20			
					8						
		3		31							
		12		8		6		10			
		2		15		0		0			
		9		6		0					
		18		36		39					
		28		12		25					
		10		14		28				20	4
		3		0		0					
		31		7		31					
		3				27					
		5		19							
		35		6		30					
		14		16		23					
		11		35		25					
		19		5		6					
		19		26		51					3
		4		4		24					
		23		86		9				28	
		8		3		25					
		34		41		60			5	35	19
		11		2		89					
		28				154					
		22		29		113				5	2

Multi-State Dashboard – Multi-State View

COVID-19 Aggregated Population Health Dashboard

The visualizations in this dashboard are generated from clinical data reported to contributing Health Information Exchanges (HIEs)

Visualization counts may not always equal total individuals tested due to underlying data pre-aggregated, PHI suppressed where n<5, and multiple organizations sending different data about the same identity



Federal Regulations: Info Blocking, Patient Access & More



New Federal Rule: Information Blocking



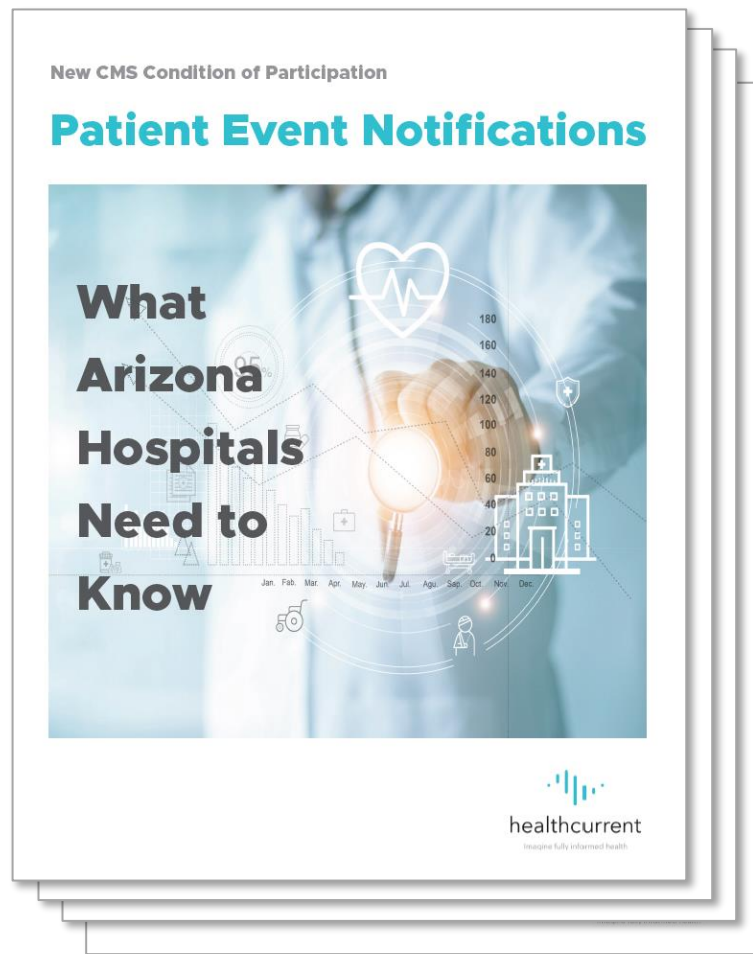
New CMS Condition of Participation: Patient Event Notifications

HIEs can serve as an intermediary to support hospitals in meeting their requirements

Health Current offering new CMS CoP Compliance (C3) Support Services

White paper available at:

www.healthcurrent.org/cms2021

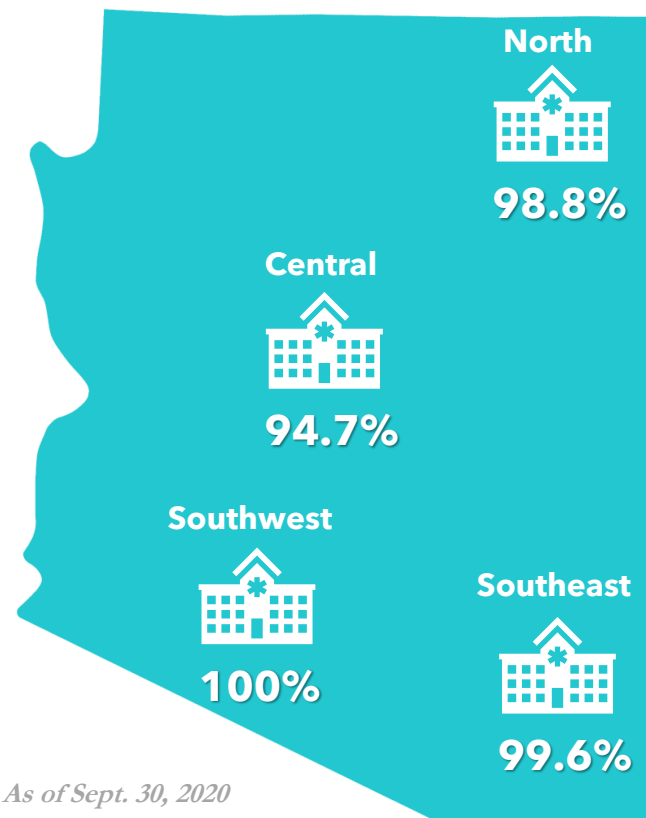


Value-Added Benefits of Using HIE to Meet CoP

Uniform approach for **hospitals** and **providers**
Health Current can:

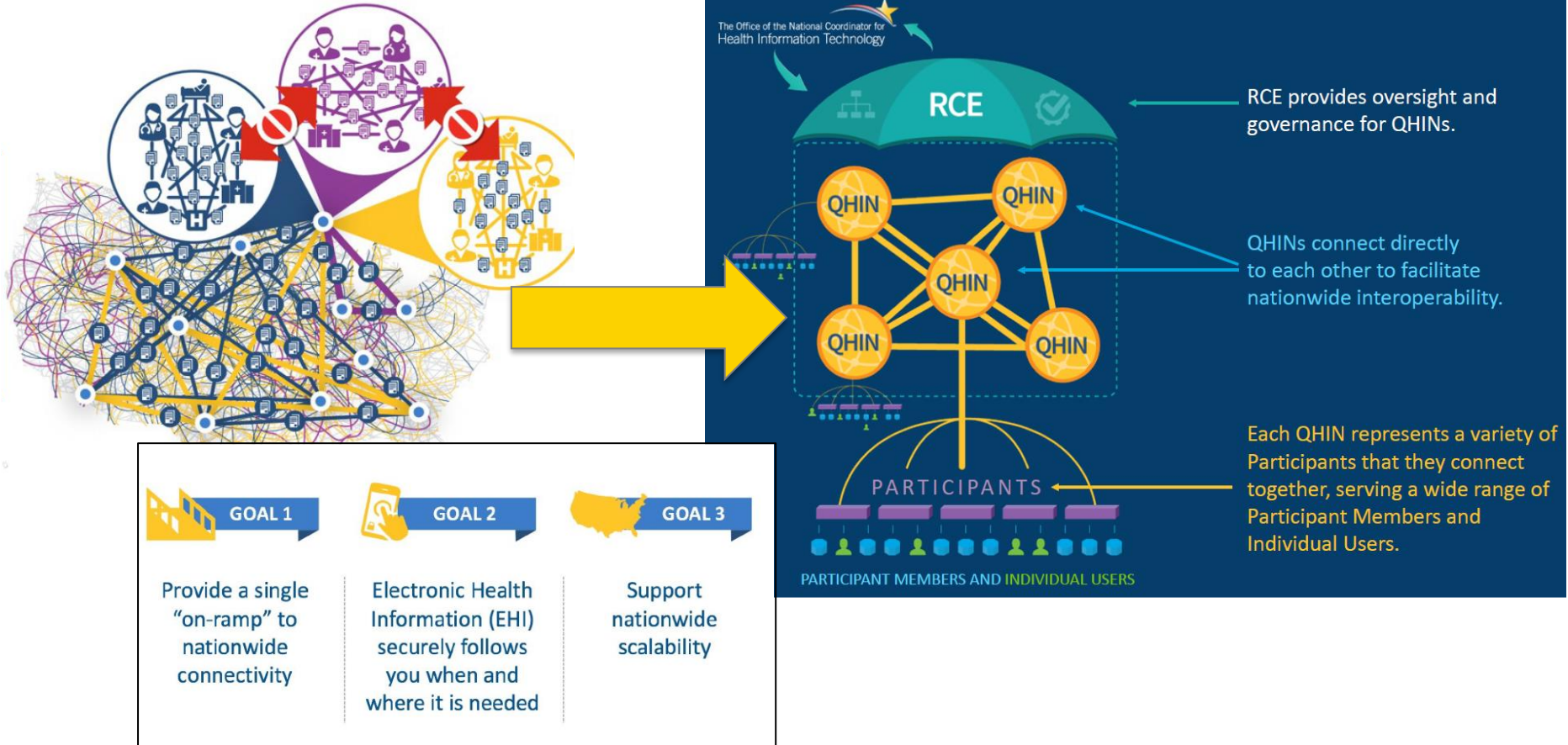
- Leverage existing connections from nearly every hospital in Arizona
 - Receiving inbound ADTs from 97% of inpatient and ED took 10 years and significant investment to develop
- Expand outreach to connect to PCPs and PACs **statewide**
 - Enable **providers to manage** the alerts they receive from hospitals
 - Participants represent over **10,000 providers and counting**

Hospitals Sending ADTs, Results & Clinical Documents



As of Sept. 30, 2020

Trusted Exchange Framework & Common Agreement (TEFCA)



Multiple National Interoperability Networks

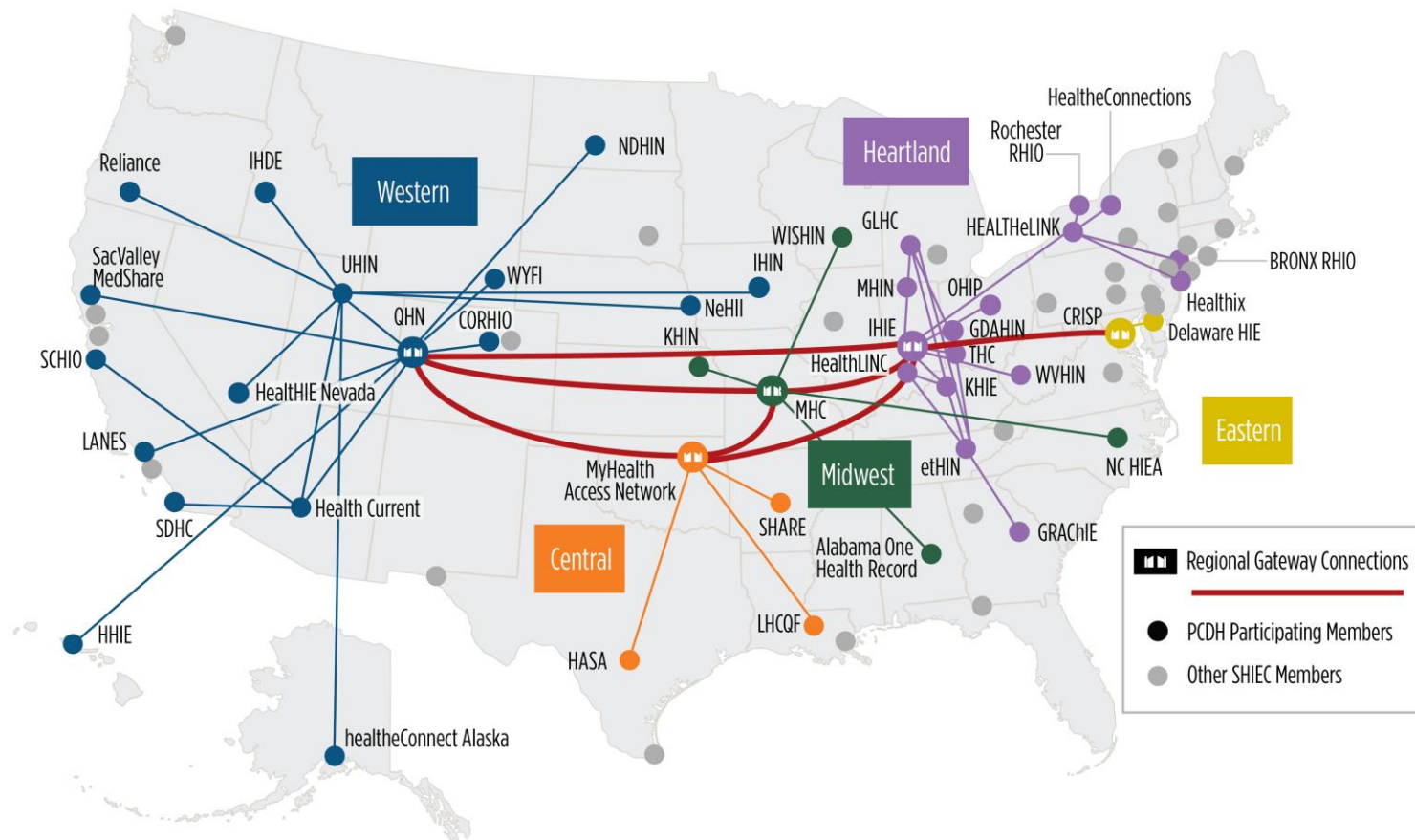
eHealth Exchange™

 commonwell®
HEALTH ALLIANCE

carequality



Nationwide HIE Connectivity via Patient Centered Data Home™ (PCDH)



HIE Regionalization, Health Data Utilities and Beyond



HIE Regionalization Moving Forward...



<https://healthcurrent.org/corhio-and-health-current-merger/>

The HIE Evolution: Regionalization & Collaboration Trends

POSTED BY: INDUSTRY NEWS JANUARY 11, 2017



Cal INDEX and Inland Empire HIE will merge to form California's largest health information exchange; former White House technology advisor named CEO

Statewide nonprofit health information exchange will include more than 16 million health information records and participation from 15,000 provider partners

The California Integrated Data Exchange (Cal INDEX) and Inland Empire Health Information Exchange (IEHIE) announced a plan

merger that will create one of the nation's most comprehensive nonprofit health information exchanges (HIEs).

2017

2 Major NY Health Information Exchanges Announce Merger

Healthix and New York Care Information Gateway (NYCIG) have joined forces to potentially become the largest HIE network in the country.



Indiana Health Information Exchange

ABOUT

PRODUCTS

Indiana HIEs unify to better meet the needs of the state's healthcare community

Indianapolis, Ind., Nov. 13, 2019 - [Indiana Health Information Exchange](#) (IHIE) and [Michiana Health Information Network](#) (MHIN), two pioneering health information exchanges (HIEs) in the nation, will consolidate their services and operations to unify HIE services for the state of Indiana.

IHIE and MHIN have signed an agreement to consolidate on January 1, 2020.

"The evolution of national interoperability is driving the need for HIEs to adapt, but also creating opportunities for new HIE value propositions," said John Kansky, President and CEO of the Indiana Health Information Exchange. "To deliver this new value, HIEs need to make significant investments and operate on a larger scale."

2019



2020

Regionalization & Collaboration Accelerates in 2020 & 2021!



2020

CORHIO and Health Current Join Forces and Announce Intent to Form New Regional Organization

Two national leaders in health information exchange, Health Current in Arizona and CORHIO in Colorado, announced today their intent to merge for



2021

Velatura Public Benefit Corporation Announces the Formation of Velatura HIE Corporation, Affiliation with Midwest Health Connection

The consolidated HIE service connects more than 1,300 healthcare organizations

GRAND RAPIDS, MICH. — Velatura Public Benefit Corporation (Velatura) today announced the formation of the Velatura HIE Corporation, a not-for-profit organization that will offer affiliation and integration opportunities to health information exchanges (HIEs) across the country. Missouri-based Midwest Health Connection (MHC), one of the largest HIEs in the



CyncHealth and Iowa Health Information Network (IHIN) Announce Partnership

JAN 5, 2021

Under the arrangement NEHII will continue all services of IHIN as IHIN remains the state designated entity for purposes of administering and governing the statewide Iowa health information network.

Velatura Public Benefit Corporation and KPI Ninja Partner with Wisconsin Statewide Health Information Network

11.3.2021 | 1 | 0 | 0 | Announcements, MiHIN, Press Releases, Velatura

Published: 3/11/21 - FOR IMMEDIATE RELEASE March 11, 2021 For additional information, contact: Velatura: Emily Mata 517.745.8835 | emily.mata@mihin.org WISHIN: Joe Kachelski 608.268.1838 | jkachelski@wishin.org KPI Ninja: Vineeth Yeddula 402.419.0906 | vineeth@kpininja.com Velatura Public Benefit Corporation and KPI Ninja Partner with Wisconsin Statewide Health Information Network Strategic collaboration improves solutions, services and interoperability in the Midwest GRAND RAPIDS, Mich. —Wisconsin Statewide Health Information Network, Inc. (WISHIN), the state-designated health information exchange (HIE) for Wisconsin, today announced its contract with Velatura Public Benefit Corporation (Velatura) to provide a robust, secure, and scalable HIE platform and expand services for its provider and payer

2021

2021

2021

Six Health Information Exchange Organizations Across the U.S. Form New Consortium



The 501(c)(3) Consortium for State and Regional Interoperability aims to help drive individual and population health improvements across the nation through robust and innovative sharing of health information.

New Service Offerings, Data Sets & More!

- Claims data
- Social determinants of health
- Health equity
- Advance directives
- Patient access
- Telehealth support
- Public health
- Research

Key Takeaways

- HIEs continue to support their communities, including expansion in new and needed areas
- Evolution of HIE will continue – health data utility models, regionalization and consolidation, etc.
- Interoperability will be shaped by upcoming federal regulations, further advancing data sharing and patient access
- Public health infrastructure focus will be critical in coming years, as nation recovers from pandemic and prepares for the future



Thank You!

Melissa A. Kotrys, MPH
Chief Executive Officer

melissa.kotrys@healthcurrent.org

Twitter: @melissakotrys

www.healthcurrent.org

The background is a solid teal color with a pattern of white, wavy, hand-drawn lines that resemble ocean waves or stylized hair, creating a textured effect.

**Imagine
fully
informed
health.**