



# SDoH Workshop

Exploring Ways to Coordinate Care Sectors, Address  
Policy and Privacy Barriers, and Enable SDoH Data Sharing

# AGENDA

---

9:00

Welcome & Overview of Day (*Kimberly Bachelder*)

11:30

Break and Networking

9:15

Summary of March 23 Panel Presentation (*Kimberly Bachelder*)

12:00

Summary of Breakout Session by Facilitators

9:30

Overview of Breakout Sessions (*Dr. Michael Klinkman, Shreya Patel, Michael Taylor*)

12:45

Next Steps & Closeout (*Kimberly Bachelder*)

10:00

Break/Get into Breakout Sessions

10:15

Care Sector Coordination  
*Dr. Michael Klinkman*

Policy/Privacy/Consent  
*Shreya Patel*

Interoperability of Data/Technology  
*Michael Taylor*

# Summary of March 23, 2021 Panelists



**Kimberly Bachelder,**  
*MiHIN*



**Kirk Smith,**  
*Greater Flint Health  
Coalition*



**Dr. Michael Englesbe,**  
*University of Michigan*



**Evelyn Gallego,**  
*EMI Advisors LLC*

# SDoH Panel Poll Questions

**What are your biggest challenges related to Clinical and Social Integrated Care Delivery?**

- Limited Resources (6)
- Lack of Cross Sector Collaboration (Identifying Partners) (2)
- Technology Limitations (2)
- Conflicting Objectives (1)

**What barriers do you face related to sharing Social Determinants of Health information?**

- Lack of Cross Sector Collaboration (Identifying Partners) (4)
- Limited Resources (3)
- Technology and/or Data Sharing Limitations (1)

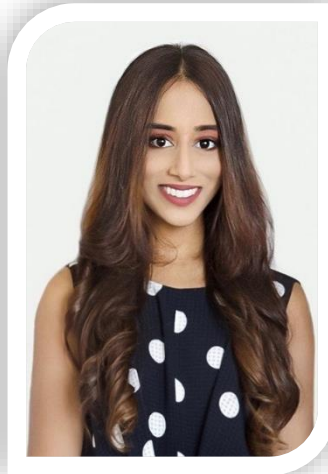
**Which category do you feel needs the most attention now?**

- Cross Sector Collaboration (Governance) (4)
- Technology & Data Sharing (3)
- Other – Not Listed (2)
- Policy/Privacy/Consent (1)

# SDoH Workshop Facilitators



**Dr. Michael Klinkman,**  
*University of Michigan  
Medical School*



**Shreya Patel,**  
*MiHIN*



**Michael Taylor,**  
*MiHIN*

# Care Sector Coordination for Community Integrated Health Networks

Michael S Klinkman, MD, MS

Professor, Departments of Family Medicine and Learning Health Sciences

University of Michigan Medical School

Faculty lead, Community Engagement

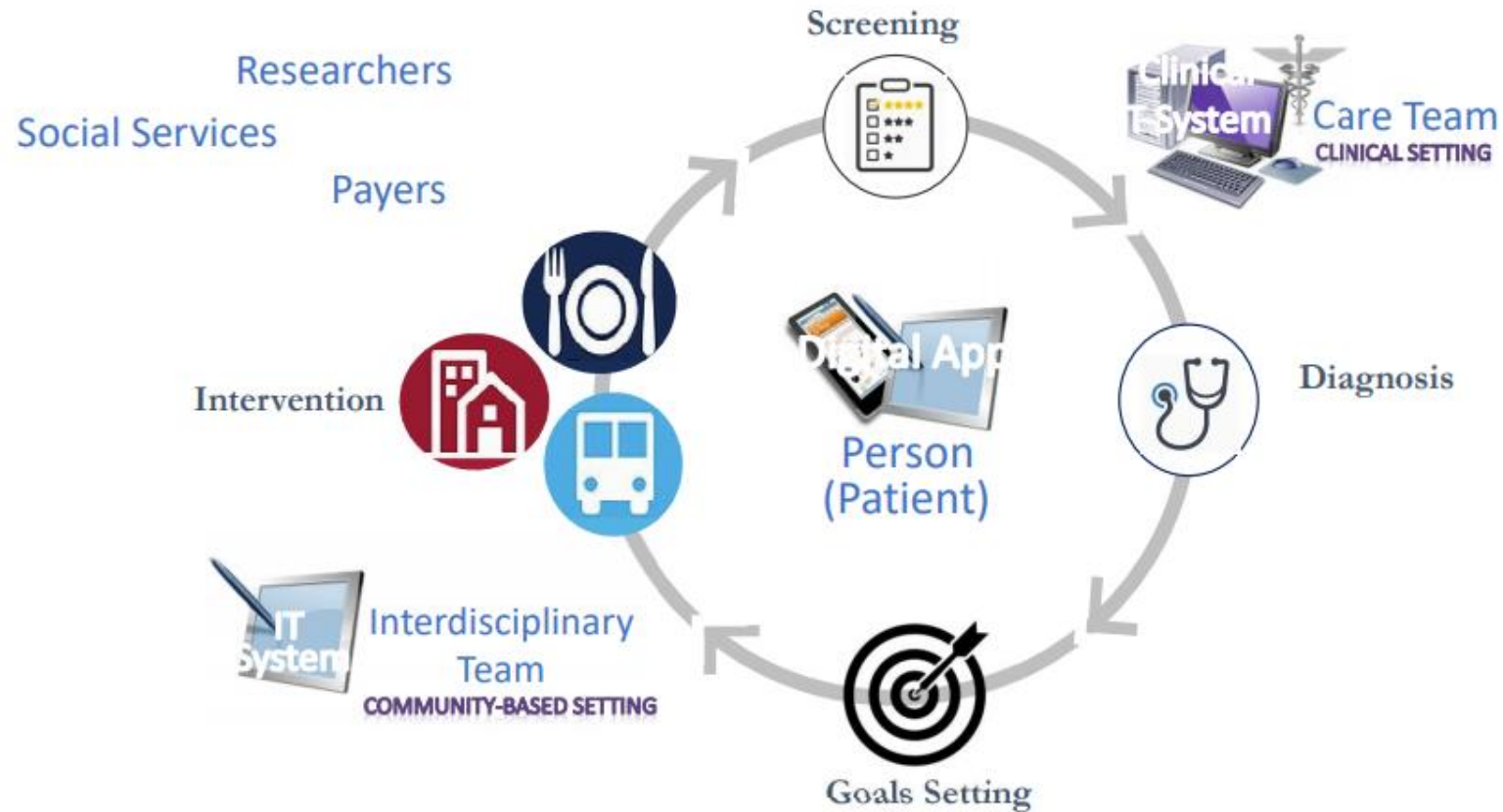
Michigan Institute for Clinical & Health Research

**If our goal is to improve health equity,  
shouldn't our solutions model equity?**

# *Gravity Project:*

## *Developing standards to support care sector coordination*

### Conceptual Framework



Source:  
Gravity Project

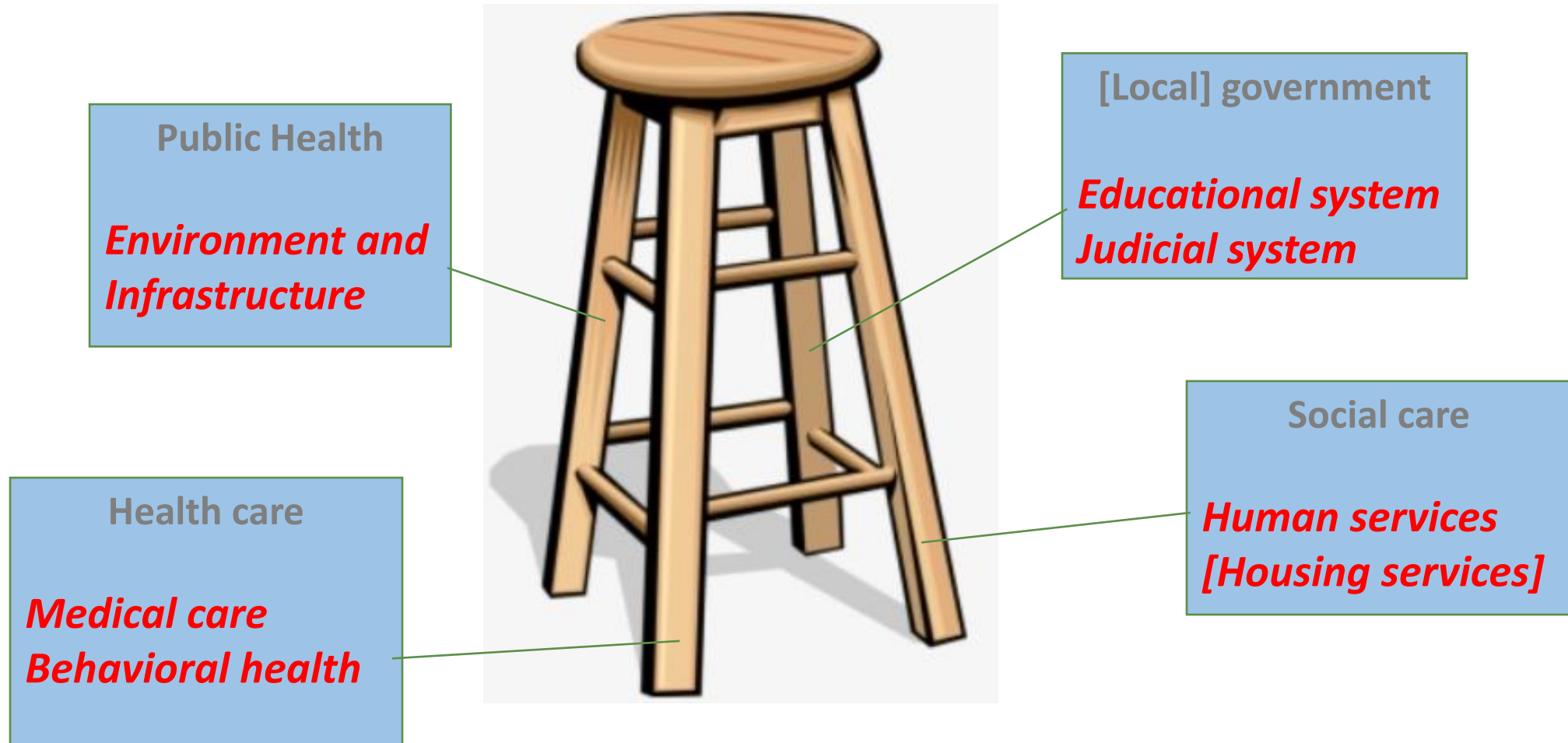
**GOAL:** data-level interoperability by enabling electronic documentation and exchange of SDOH data among all relevant users of data.



# ***Glossary of terms***

- **Sector** – an area of care (service) distinct from others
  - *ex: social care sector; medical sector*
- **System** – a set of ‘things’ working together as an interconnecting network
  - *ex: [local] health care system; school system*
- **Domain** – a specified sphere of activity (within a sector)
  - *ex: housing domain; transportation domain; food insecurity domain*
- **Community Integrated Health Network** – provides **cross-sector** care that can engage several **systems** in meeting individuals’ needs **across domains**
  - *ex: SIM CHIRs, VAAACares*
- **Community Information Exchange** – the human and technical infrastructure to support CIHNs and cross-sector care [as well as population health]
  - *ex: San Diego 211, NCCARE360, SIM CHIRs*

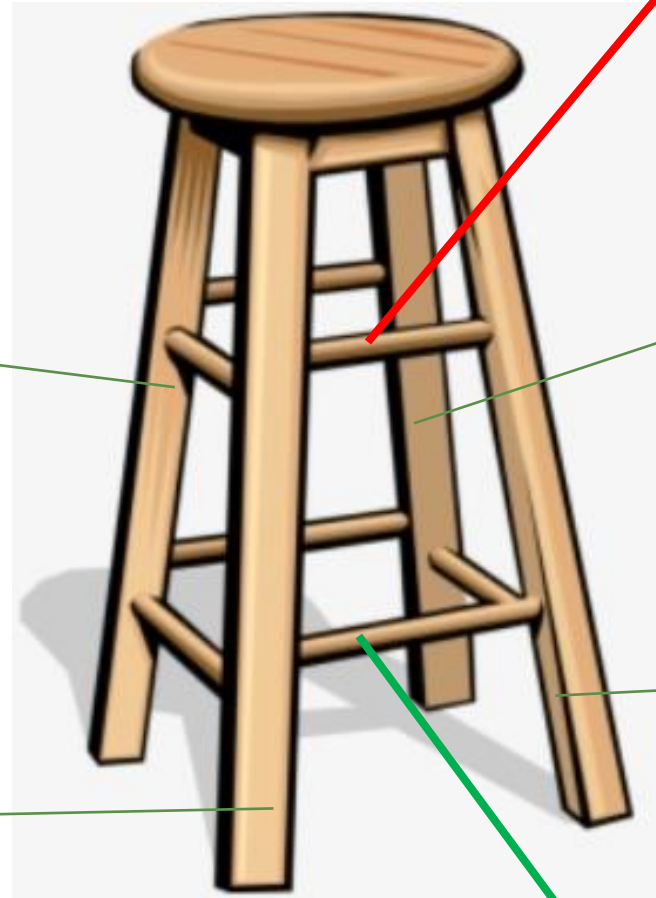
# *The 4 sectors and 6 systems engaged in a CIHN*



# Structural and operational 'building blocks' in a CIHN

**Public Health**  
*SDoH/BH screening*  
*Medical screening*  
*Environmental action*  
*PH emergency services*  
*Referrals*

**Health care  
delivery system(s)**  
*SDoH/BH screening*  
*Care coordination*  
*Referrals*



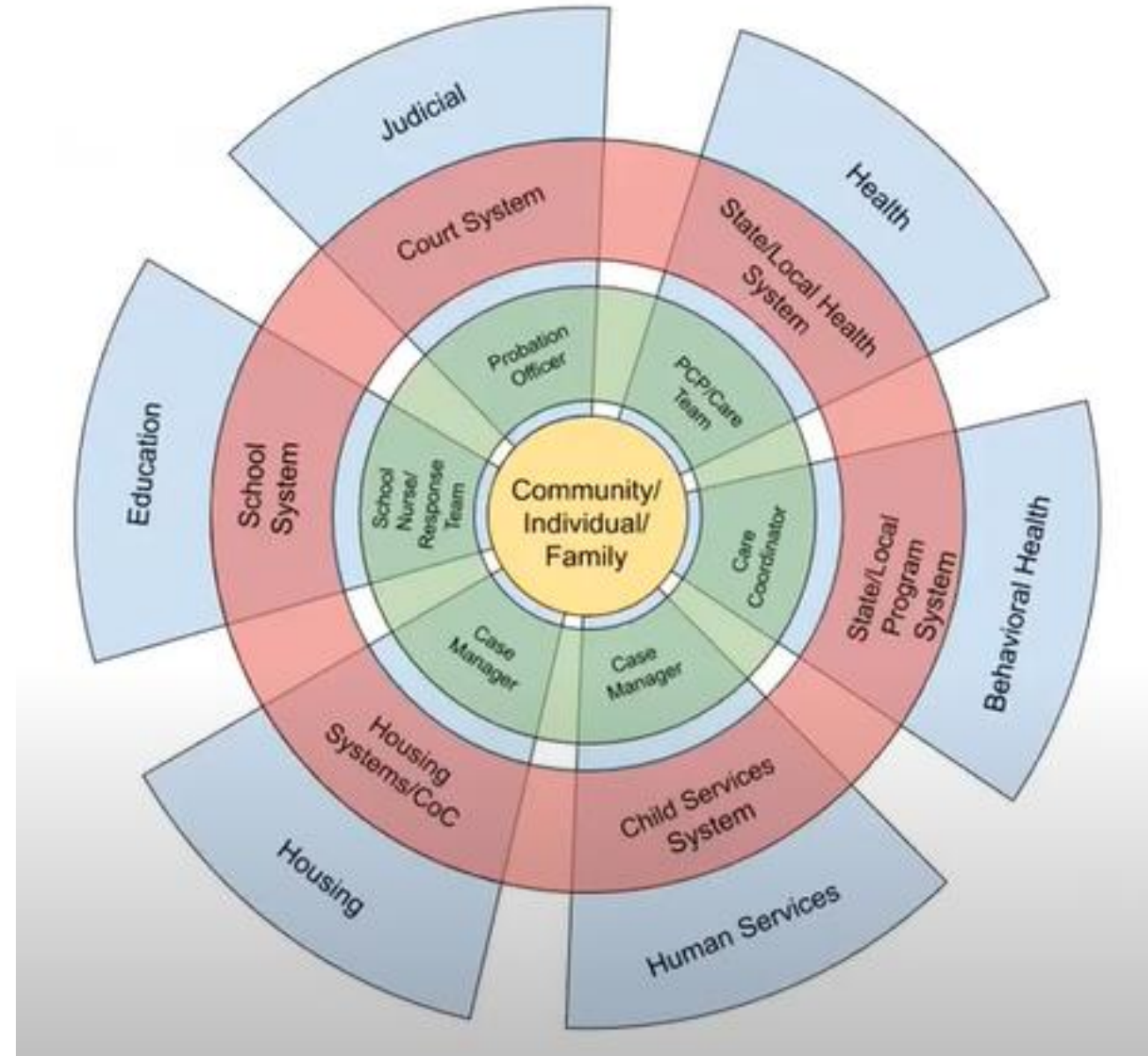
**Standards**  
*Data capture, coding, exchange*  
*Documentation and reimbursement*

**[Local] government**  
*Governance*  
*Stakeholder alignment*  
*Resource allocation*  
*Policy alignment*  
*PH emergency services*

**Social care**  
*SDoH/BH screening*  
*Medical screening*  
*Social navigation*  
*Care coordination*  
*Referrals*

**Infrastructure**  
Human and technical infrastructure necessary to connect stakeholders – common care model, communications infrastructure, IT infrastructure (hubs, applications)

***Relationships between:  
Sectors [blue]  
Systems [red]  
Care providers [green]  
and community members  
in a CIHN***



Source:  
Stewards of Change Institute

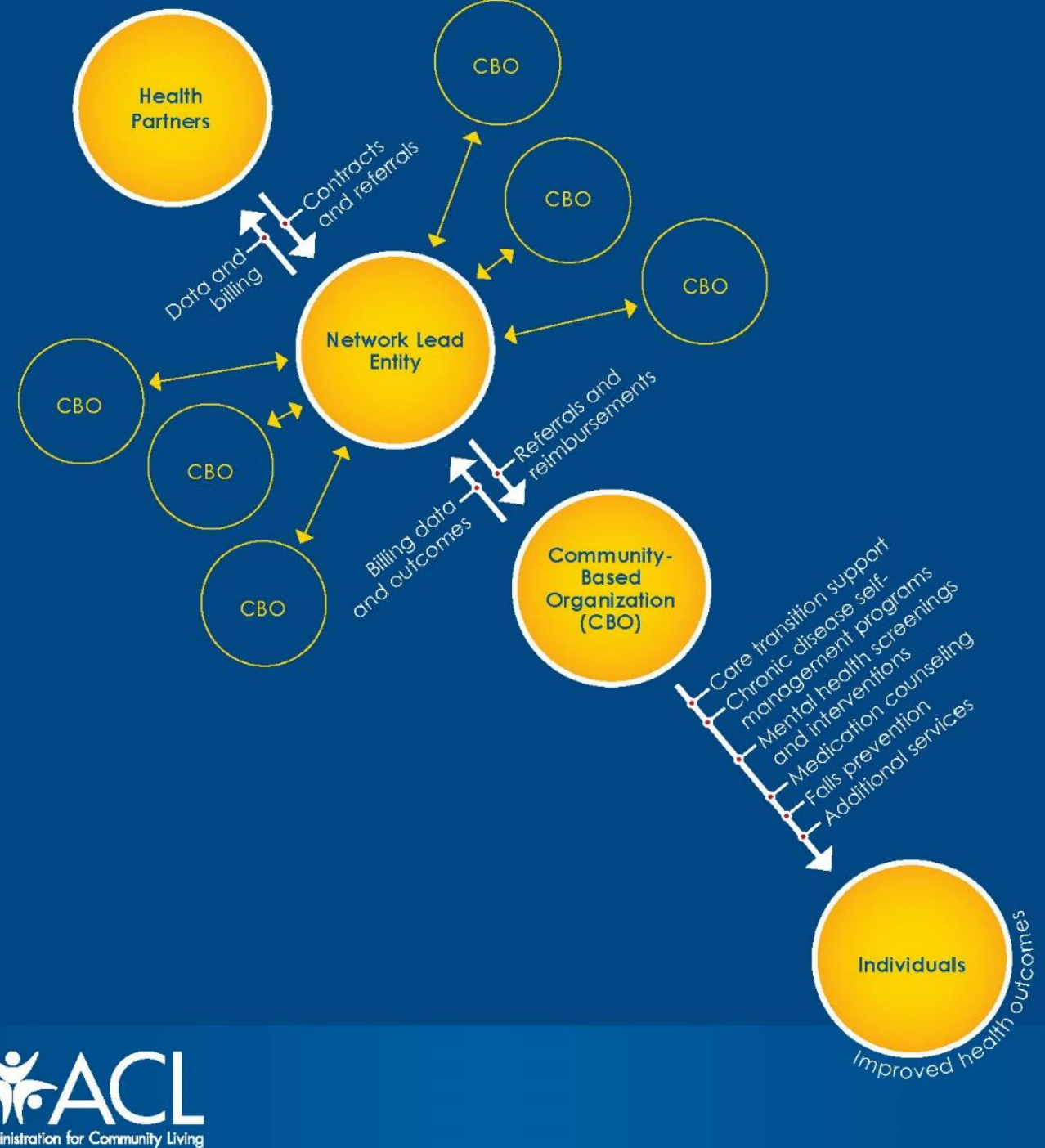
# ***Programs, relationships, and data flows in a CIHN***

Source:

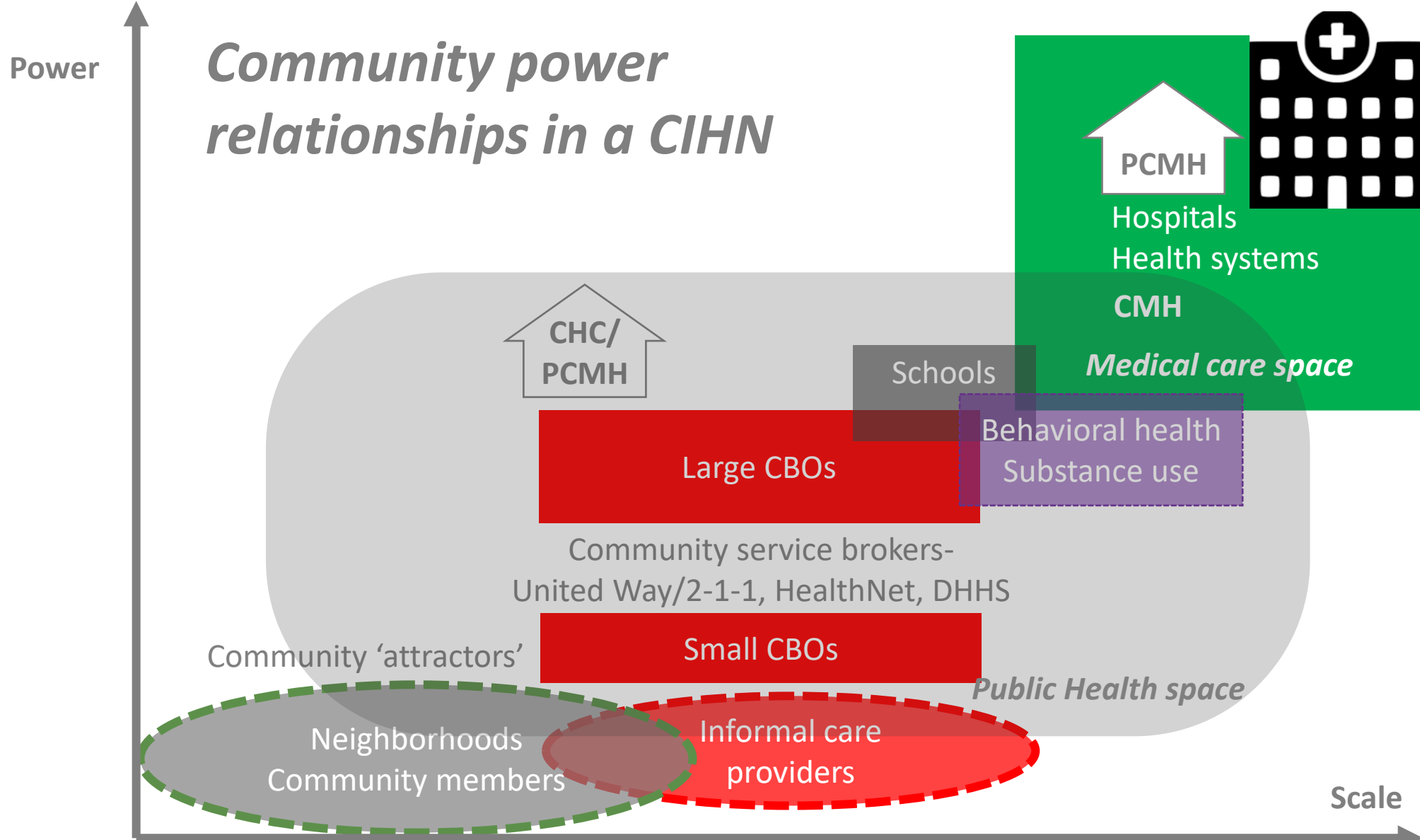
STRATEGIC FRAMEWORK FOR ACTION:  
State Opportunities to Integrate  
Services and Improve Outcomes for  
Older Adults and People with  
Disabilities

Administration for Community Living

June 2020







**Figure: Representational view of organizations involved in providing medical and social care**  
 [dotted boundary lines indicate informal, less-organized groups or providers; plain text indicates brokers]

**If our goal is to improve health equity,  
shouldn't our solutions model equity?**



Thank you!

**Dr. Michael Klinkman**

Professor, Departments of Family Medicine  
and Learning Health Sciences  
[mklinkma@med.umich.edu](mailto:mklinkma@med.umich.edu)





# Privacy & Consent

Social Determinants of Health

**Shreya Patel**

*Chief Policy and Privacy Officer*





How does patient privacy and consent play into SDOH?



# Authority to Share SDOH Information



- Authority to Share under HIPAA
- HIPAA Privacy Rule Changes
- Covered entities, business associates
- Non-medical entities
- Authority to Share under state laws and regulations



# Purposes for Using SDOH



- Care Coordination
- Primary v Secondary Use





# Data Sharing Agreements

- **Introducing SDOH into the HIE space**
  - Legal onboarding
  - Distinct terms
- **Consent Use Case Exhibit**
- **SDOH sharing for which there may be a stigma**





**Thank you!**

**Shreya Patel**

Chief Policy and Privacy Officer  
[shreya.patel@mihin.org](mailto:shreya.patel@mihin.org)



# **Interoperability of Data/Technology**

**Social Determinants of Health**

**Michael Taylor**

***Senior Product Marketing Manager***

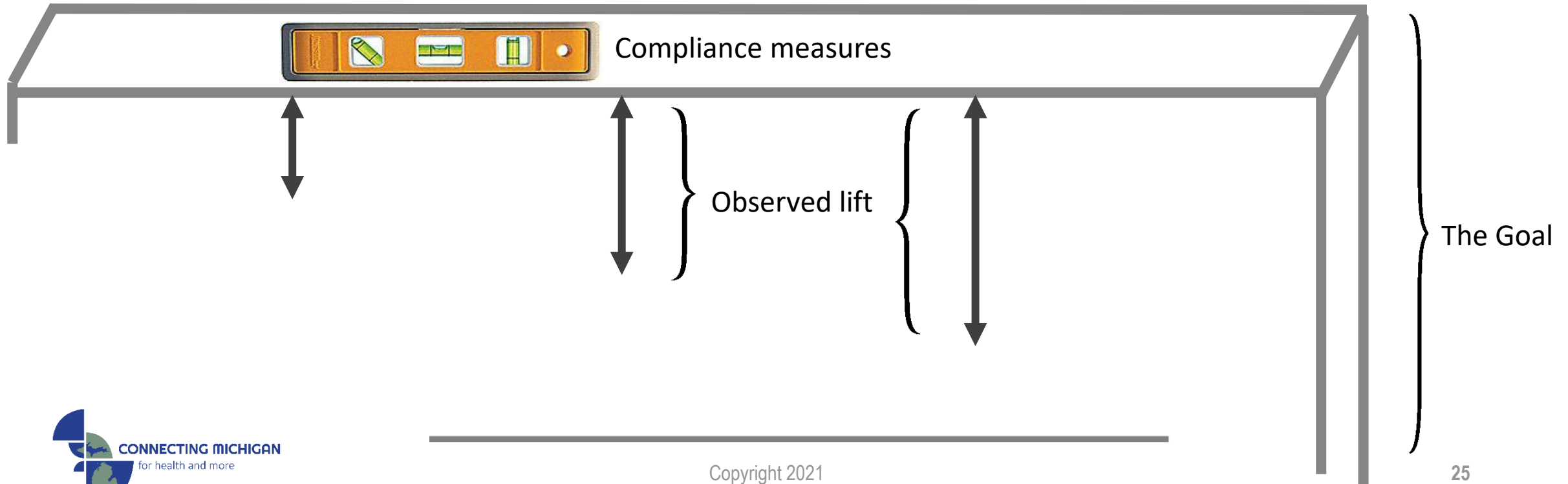


# Establishing a Floor

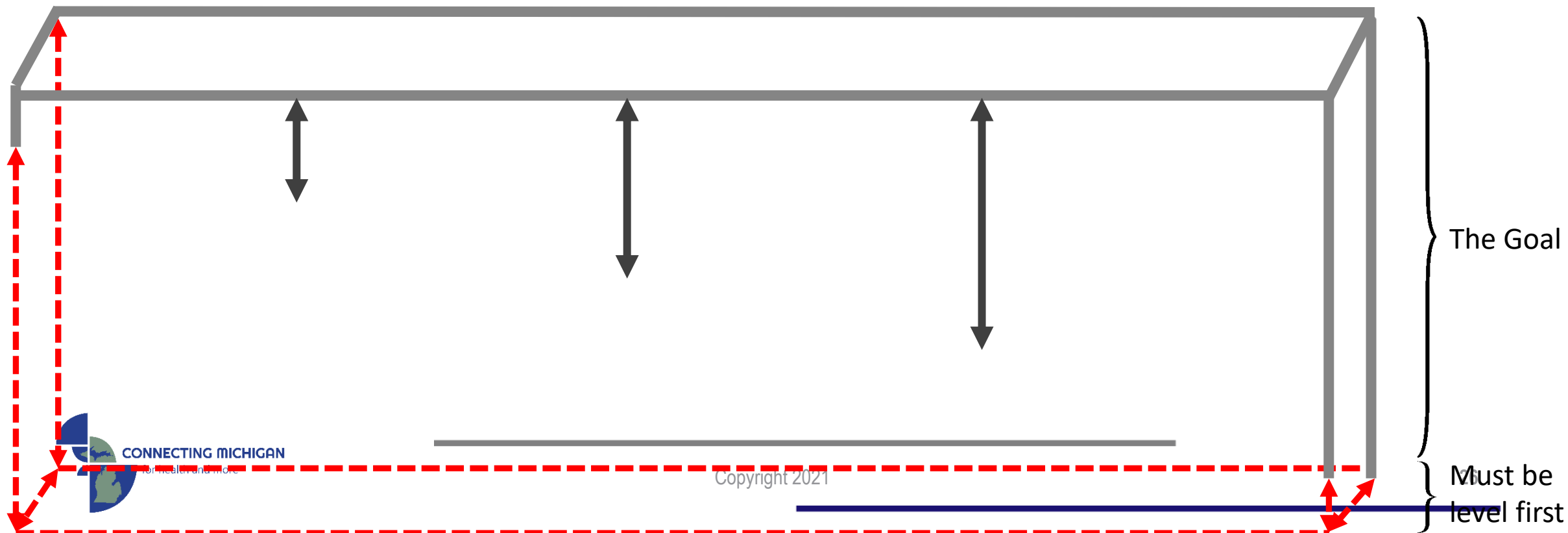




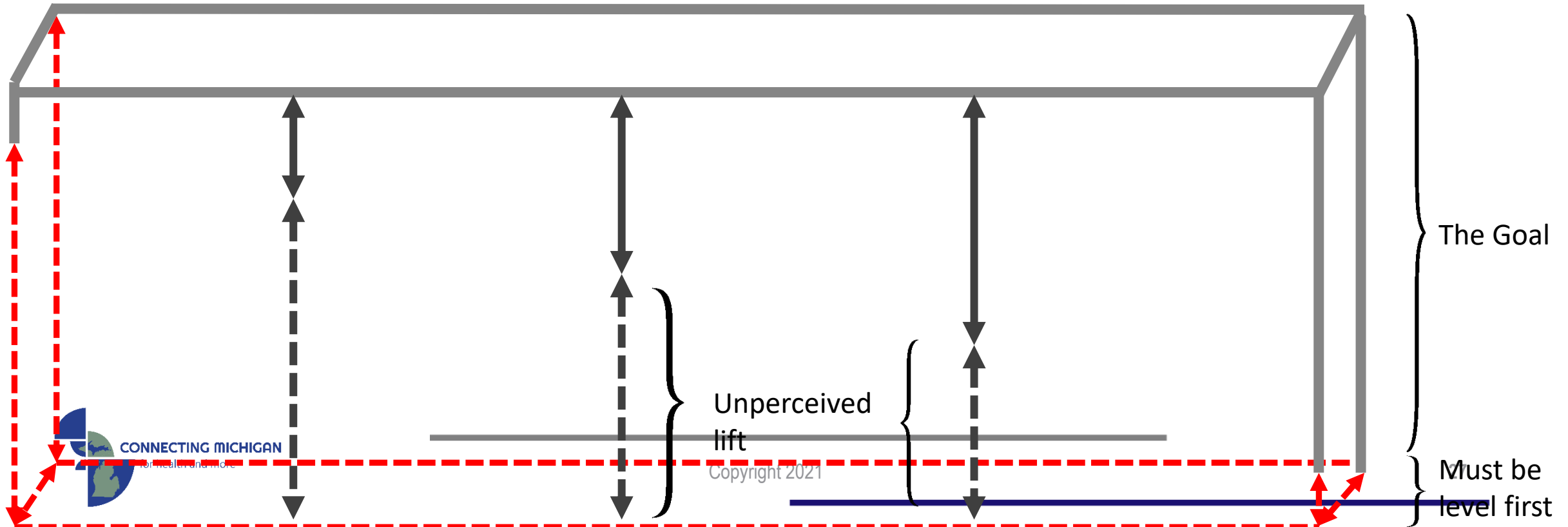
# Establishing a Floor



# Establishing a Floor



# Establishing a Floor





Thank you!

**Michael Taylor**

Senior Product Marketing Manager

[Michael.Taylor@mihin.org](mailto:Michael.Taylor@mihin.org)

# Breakout Session Instructions

- To join a breakout session of your choice at 10:15AM, click on the “Breakout Sessions” icon on the left-side of your screen
- Click the session you would like to join:
  - Care Sector Coordination
  - Policy/Privacy/Consent
  - Interoperability of Data and Technology
- Once you’re in, share your opinions and engage in the conversation
- When the breakout concludes, click on the “Main Stage” icon to continue to the next part of our program