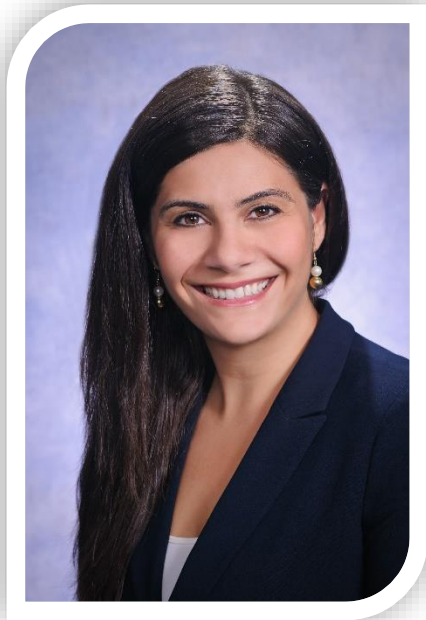


May 4, 2021

THE DOWNLOAD

A monthly webinar diving into the intersection of healthcare and technology





Katrina Gagne
Outreach Specialist
MiHIN



Tracy Webb
Outreach Manager
MiHIN

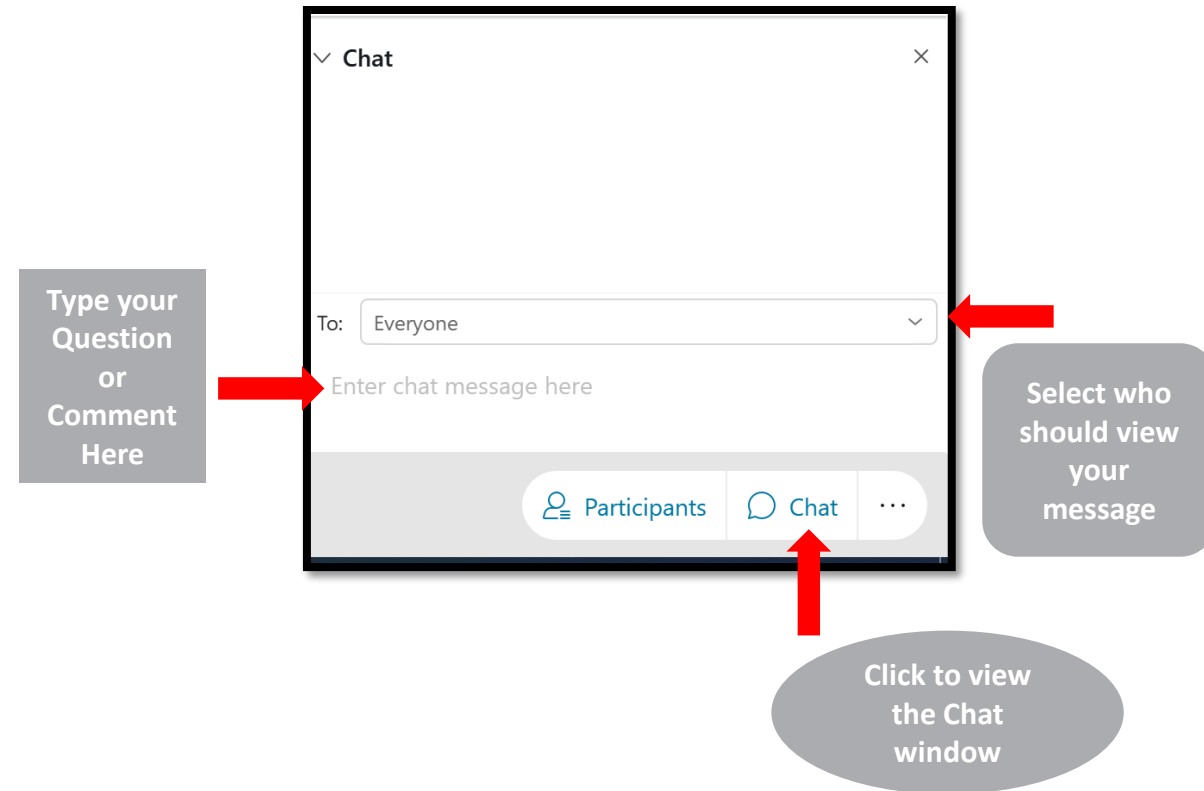
- **Katrina (Facilitator)**
- **Tracy (WebEx Chat Moderator)**

Welcome to THE DOWNLOAD

Let's Get Started...

- This session is being recorded and will be available after the meeting on the MiHIN website.
- All attendees are muted
- Participating in the forum
 - Ask questions and make comments using the WebEx Chat
 - Presenters will answer your question via chat after each segment, or the moderator will read your question aloud towards the end of the webinar.
 - All unanswered questions today will be answered via email to all attendees.

- Chat Controls
 - On the right-side of your screen





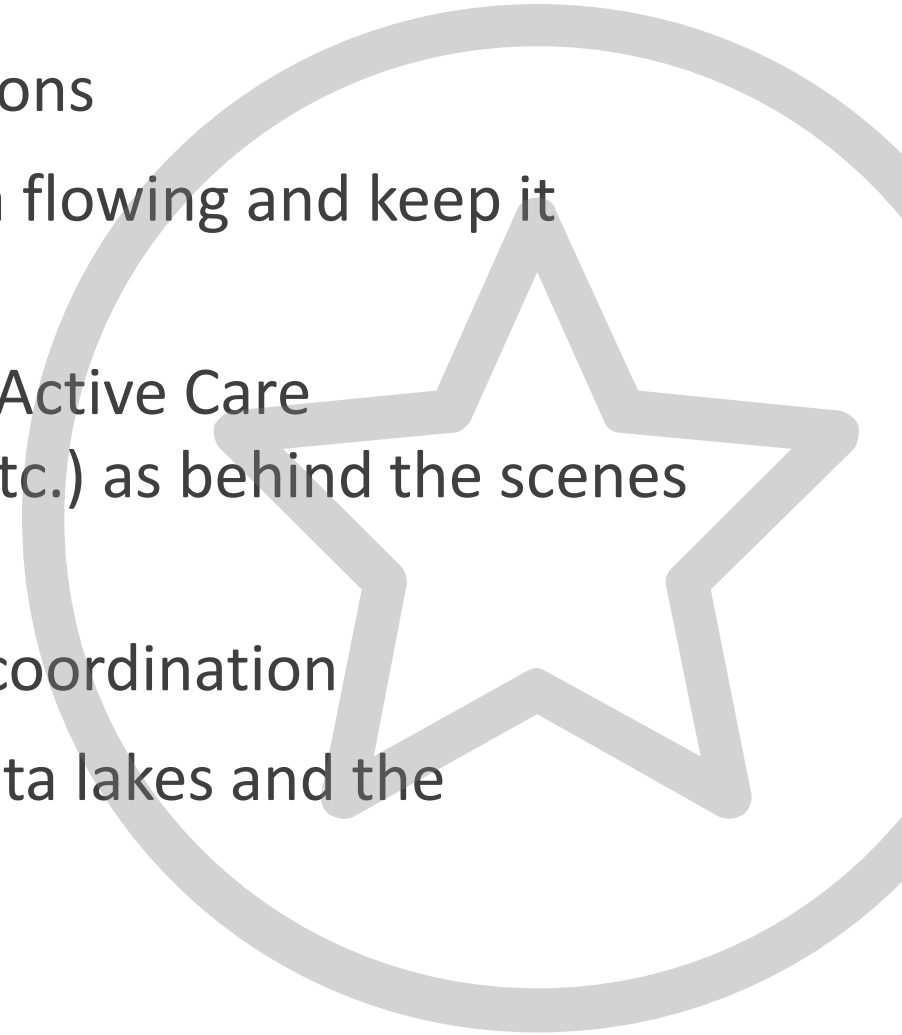
Michigan Health Information Network Shared Services (MiHIN)

MiHIN is Michigan's initiative to continuously improve healthcare quality, efficiency, and patient safety by promoting secure, electronic exchange of health information. MiHIN represents a growing network of public and private organizations working to overcome data sharing barriers, reduce costs, and ultimately advance the health of Michigan's population.

MiHIN is a
network for sharing health
information statewide for Michigan

MiHIN's Five Focus Areas

1. Convening people to figure out functional solutions
2. Champion Statewide Use Cases to fairly get data flowing and keep it moving securely among all legitimate parties
3. Operate as a Shared Services (Health Directory, Active Care Relationships, Security, Legal, Client Matching, etc.) as behind the scenes infrastructure
4. Providing tools to support daily workflows and coordination
5. Reporting, Conformance, and Analytics from data lakes and the longitudinal health record



Today's Agenda

01

Welcome

Katrina Gagne

02

Michigan Five-Year Health IT Roadmap

Don Ross
CEDARBRIDGE Group

03

Overview of Interoperability Institute's Interoperability Land

Stephanie Arntson

04

Announcements

Katrina Gagne

05

Q&A

All – facilitated by Tracy Webb



CEDARBRIDGE
GROUP

Michigan Five-Year Health IT Roadmap

*Download webinar
May 4, 2021*



An Update on Stakeholder Outreach and Discovery

- 16 interactive Stakeholder Forums held from September through early November
- Electronic Surveys launched in October 2020, and closed February 12, 2021
- Key Informant Interviews conducted beginning in November and continue through February

* We also had participation from health information exchange organizations, consumer advocates, and other stakeholders

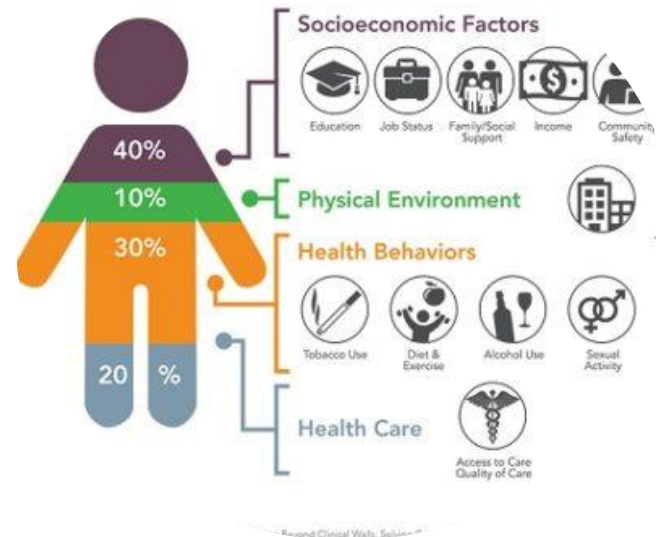
Stakeholder Domains*

- Behavioral Health
- Long Term & Post Acute Care
- Social Services
- Ambulatory providers
- Hospitals and Health Systems
- Emergency Services
- Public Health

Findings

- **In response to the pandemic, Michigan providers rapidly expanded their use of telehealth** and other virtual patient engagement technologies.
- Telehealth is widely recognized as an essential tool that should continue to expand and evolve.
- **Both statewide and targeted local investments in public health IT infrastructure are needed** to better address both the current pandemic, as well as future public health threats.
- These include, but are not limited to, disease surveillance systems, contact tracing systems, and electronic case reporting systems.





Findings continued...

Addressing social determinants of health was reported to be a priority for nearly all stakeholder groups. Improved screening protocols for identifying clients' social risk factors was a common theme reported by healthcare providers.

With these advancements, the delivery system must now **focus on standardizing SDoH data and improving coordination** through more efficient referral capabilities, preferably using a closed-loop referral platform that allows referring providers to monitor the outcome and status of referrals.

Findings continued...

- **Access to broadband internet and cellular services** continues to be a significant challenge for many rural and underserved urban populations.
- Michigan has made significant investments in health IT tools, yet many providers and clients lack the ability to consistently connect when needed.
- Increasing broadband access is a foundational element to expanding the adoption and use of existing tools.
- **Rural, vulnerable, and underserved populations are at risk of wider health inequities and racial disparities** when they lack consistent access to internet services and cellular phones with data and text messaging.
- Investments in these tools for underserved communities, as well as education and assistance programs for the aging population and the technology-challenged were identified as key needs.



Findings continued...

Significant gaps remain in health IT and HIE adoption between larger providers (hospitals, physician groups, health systems) **and smaller independent practices** (rural health clinics, behavioral health clinics, long term care facilities, aging and disability services, etc.).

Additional education, training, and investments are needed to improve HIE adoption and coordinated data exchange among smaller provider groups.

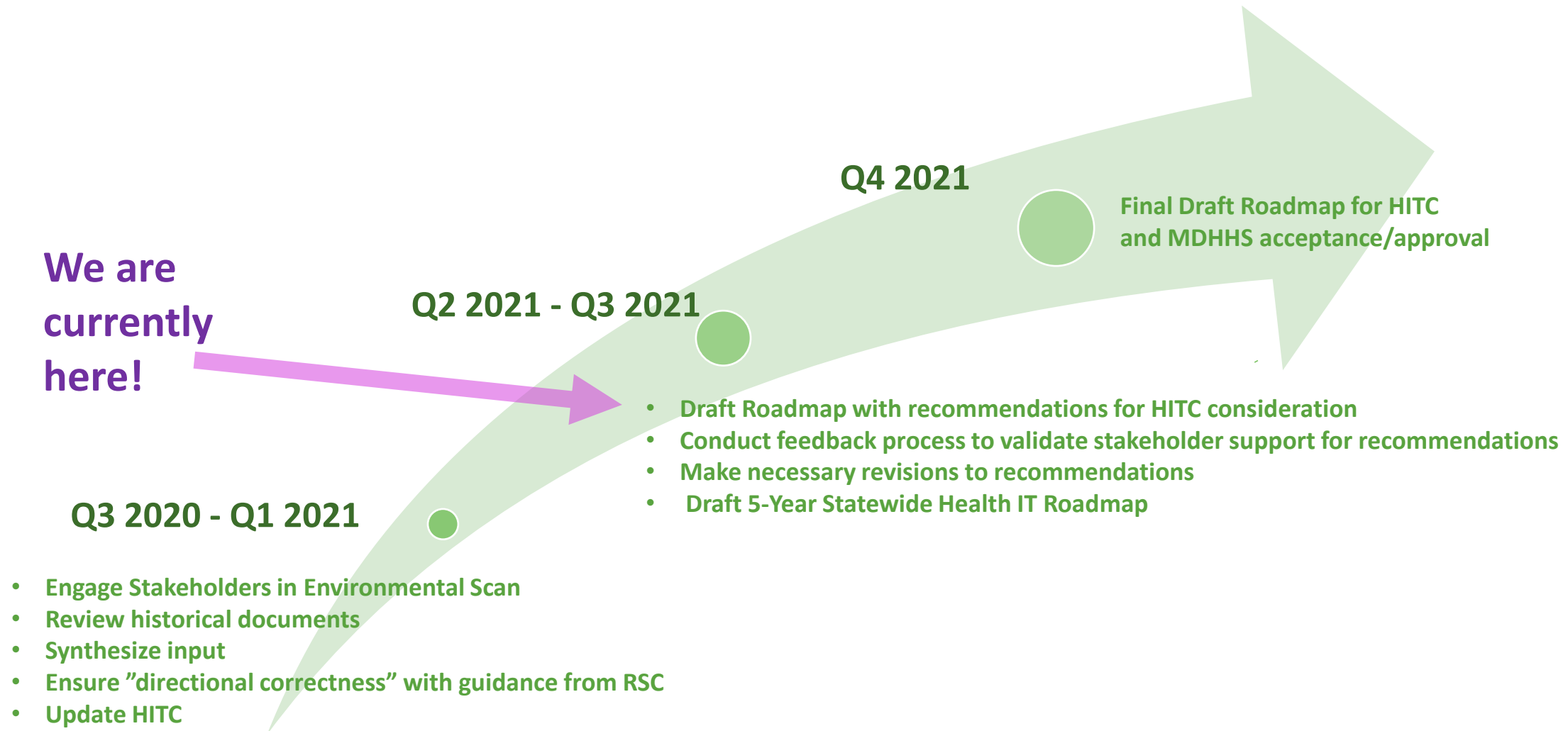


Discover and Analysis Phases are complete

- ~ 400 attendees to 16 interactive virtual forums
- ~ 200 survey respondents
- ~ 40 in-depth interviews with ~100 key informants
- A review of historical documents



High Level Timeline for Roadmap Development Process



Upcoming Activities and Milestones

➤ **April**

- Draft Environmental Scan & Roadmap Recommendations Report

➤ **May**

- **Present the Environmental Scan and Roadmap Recommendations Report to Health IT Commission**

➤ **June – July**

- Validation of recommendations through stakeholder feedback and comments; ***“Did we hear you correctly?”***

➤ **August – September**

- Incorporate feedback on recommendations into the **5-year Statewide Health IT Roadmap with Sustainability Plan**

➤ **October**

- **Present the Draft 5-year Statewide Health IT Roadmap with Sustainability Plan to Health IT Commission**

➤ **November – December**

- Deliver the Final Roadmap for MDHHS to present to Michigan Health Endowment Fund

Questions and comments?

Thank you!

For more information, please contact
Don Ross, Senior Director

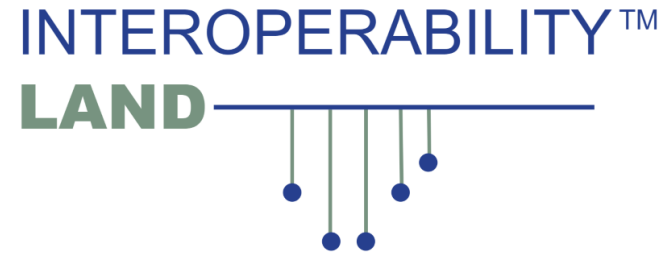


**INTEROPERABILITY
INSTITUTE**

Interoperability Land™

Intro/Overview for The MiHIN Download

May 4, 2021

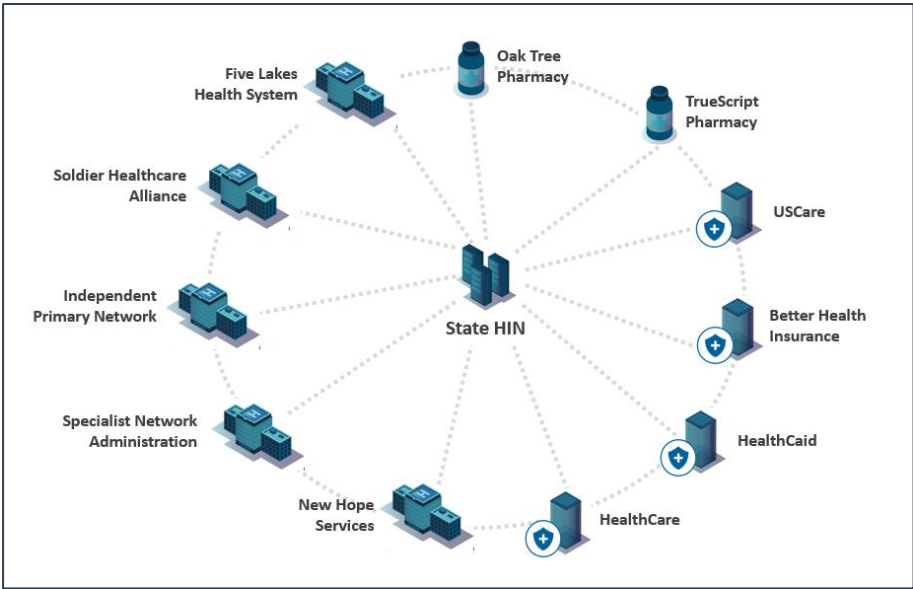


- Enables advanced interoperability testing and development
- AWS cloud-hosted
- Highly realistic and clinically relevant synthetic patient data
- No PHI disclosure risks
- Compliant with HL7[®] FHIR[®] standards



Platform for Learning and Innovation Discovery

INTEROPERABILITY™ LAND



Tech Incubators



Academic Centers



Corporate Internal Labs & Innovation Centers



Standards Organizations

Synthetic Data

PatientGen is a HL7 FHIR-compatible test data generator that produces realistic patient histories involving clinically relevant patient encounters

- Generates “SimPatients” at scale for developing and testing healthcare software
- Patients progress through health states via symptoms, encounters, observations, diagnoses, medications and procedures
- Produces realistic case histories using real U.S. population statistics
 - Patient demographics
 - Incidence and prevalence of health conditions
 - Complications & mortality
- Populates a realistic healthcare network having multiple FHIR databases

Personas are realistic and complete synthetic representations of a person.



Persona Narrative

Sarah Thompson

Sarah Thompson is struggling with a heroin/opioid addiction. She is working with a case manager and some of her information is stored out-of-state...

Facts of Interest:

- Charged with DUI and possession of a Level 1 controlled substance
- Goes to an out-of-state maintenance treatment facility in Toledo, OH
- Attends weekly progress meeting with care coordinator who monitors her progress
- Completed 12-month methadone outpatient program
- On Wellbutrin for depression and anxiety
- Lab results from regular drug testing

Current Use Cases:

- Health Risk Assessment
- Opioid Monitoring
- Statewide Lab Orders-Results
- Medication History
- Find Patient Records

Interoperability Land™ 2.0



Interoperability Land™ Open Source

- Ideal for education, learning, and training programs
- Use to promote standards development
- Open collaboration platform



Interoperability Land™ Private Label

- Accelerate innovative healthcare apps
- PaaS/IaaS Cloud hosted sandbox to explore SDK(s)
- IT support and value-add services available
- Safely test the boundaries of use cases or technologies



Interoperability Land™ Sandbox as a Service

- Integrate with other sandboxes (Sandbox-of-Sandboxes)
- Persistent mega-sandbox to create virtual healthcare organization(s)
- Integrate with existing build pipelines to for testing, builds, and demo'ing apps and APIs

Interop.Community Offering

Sandbox



Open Source features
and engagement;
Standards Development

Open Education
Resources (OER)
Commons 'course packs'
for Academic Curriculum

Free and Open Source
Software Code with basic
functions

Test Data and Persona
datasets

Interoperability Land™ Private Label

Managed Infrastructure

- Updates
- System monitoring
- Tech Support
- Storage
- Security

Securely Work in private with 3rd party vendors on your custom sandbox solution

- Configure and deploy APIs in a secure private sandbox
- Explore SDK for custom API builds
- Implement custom configurations

Unmanaged Tech

- Enroll and remove users and allocations as you see fit
- Configurable deployment to accelerate interoperability
- Synthetic test data for your organizational needs

Mega Sandbox-of-Sandboxes

(A distributed loosely governed testbed network)



Validation + Verification

Allocate and run automated validation and verification tools



Synthetic Data Generation

Customized synthetic data of standard industry use cases



Custom Apps

Integrate with existing build pipelines to orchestrate infrastructure for testing, building, and demo'ing healthcare applications and APIs



Cloud Based Infrastructure

Cloud native services accelerate automation and reduce costs by only paying for what you need



API, SDK, Infrastructure
Orchestration

Work from the web GUI to monitor and allocate resources or integrate with SDK for full automation



Thank you!

Stephanie Arntson

Strategic Partnerships Manager

Stephanie.Arntson@interoperabilityinstitute.org

Announcements

Introducing the MIGateway Conformance Module

- MiHIN is releasing a new MIGateway module that will allow hospitals to view, filter, and interact with their Conformance Reports in new ways
- This module will also allow for users to view and download ADT/CCDA message examples submitted by their org in an on-demand and real-time way
- These improvements seek to streamline our stakeholder experience, improve the analytical power and data available, and make it easier to achieve improvements in conformance scores

The screenshot displays the 'ADT Message Fallthrough Finder' interface. It includes a 'Controls' section with dropdowns for 'Sender' (set to 'Health, System') and 'Field of Interest' (set to 'Administrative Sex'). The 'Values to Find' dropdown is set to 'Find Non-Conformant Values'. Timeframe filters are set from '2021-02-16 00:00' to '2021-02-18 15:00'. A search bar with 'Search value' is visible. Below the controls, a table titled 'Messages Meeting Above Defined Criteria' lists four messages with their IDs and timestamps. A context menu is open over the table, showing options to 'Find Conformant Values' and 'Find Non-Conformant Values'.

SendingFacilityName	MessageControlID	SenderTS	
Health, System	467547315	2021-02-16T00:00:03.000	1
	467547316	2021-02-16T00:00:03.000	1
	467547319	2021-02-16T00:00:08.000	1
	467547320	2021-02-16T00:00:14.000	1

Message Example Retrieval Screenshot



Connecting Michigan for Health and More

Theme: Exploring the new paradigm of Healthcare 3.0 and its implications for the ongoing evolution of healthcare delivery, experience, costs, and outcomes. 2020 has been a “perfect storm” across the healthcare continuum. Many of the issues and topics that have been top of mind in healthcare for the last few years will still be pertinent in 2021 but must now be viewed in the context of all that transpired in the previous year.

Upcoming virtual events:

- **June 24** – Virtual Care (Telehealth & Patient Reported Outcomes) Workshop
- **October 12** – Sharing Psychiatric ADT and Treatment Center Notifications Workshop
- **November 9** – Summary of Healthcare Technology 3.0 – Exploring the New Paradigm

For details and to register: www.mihin.org/events.



QUESTIONS?

Join us for the next **DOWNLOAD** on



June 1, 2021



THANK YOU!

Katrina Gagne

Outreach Specialist

Katrina.Gagne@mihin.org