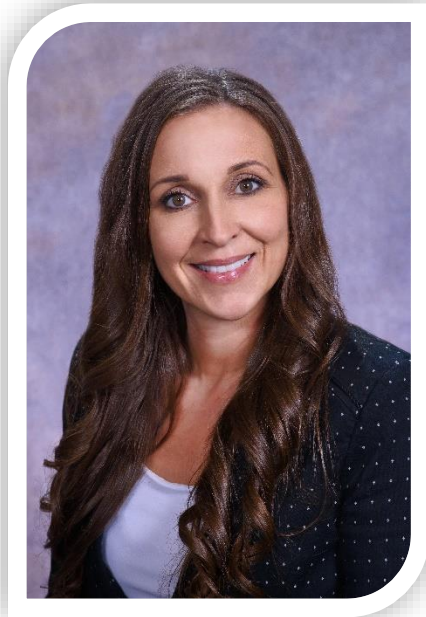


June 1, 2021

THE DOWNLOAD

A monthly webinar diving into the intersection of healthcare and technology





Tracy Webb
Outreach Manager
MiHIN

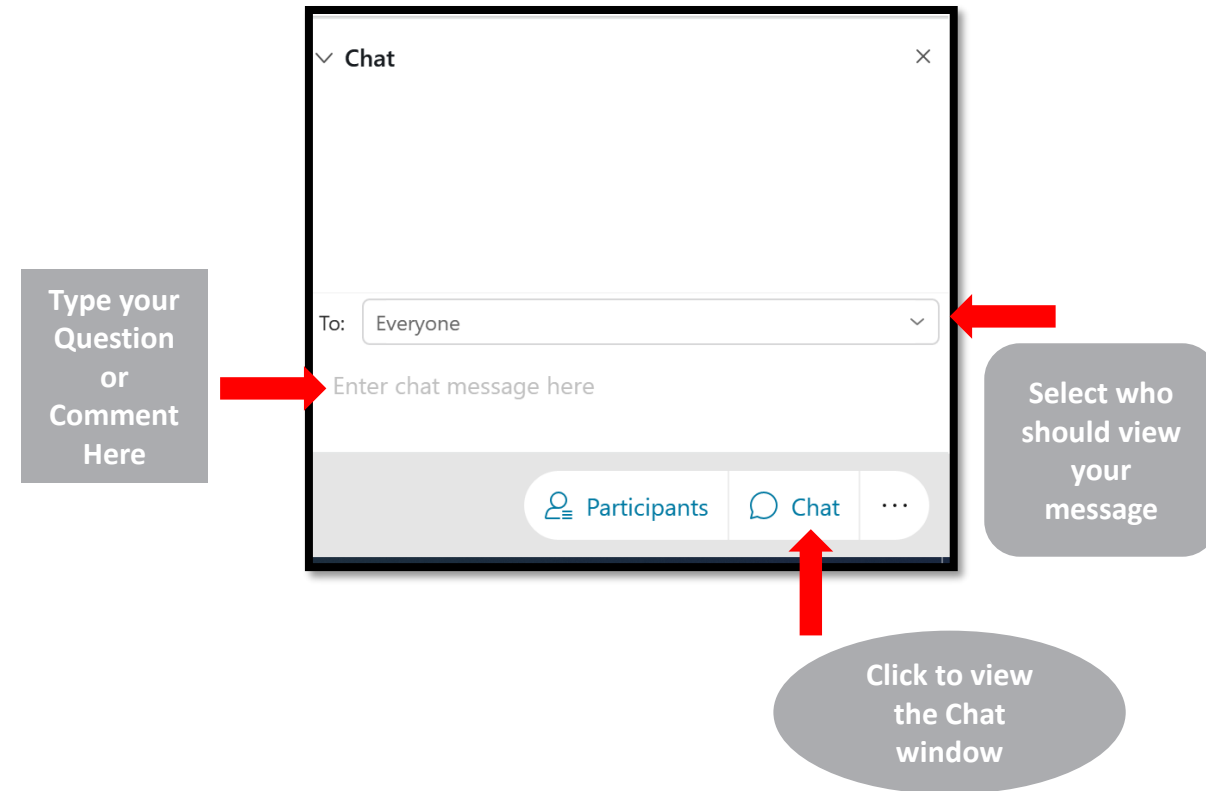
- **Tracy (Facilitator)**
- **Katy (WebEx Chat Moderator)**

Welcome to THE DOWNLOAD

Let's Get Started...

- This session is being recorded and will be available after the meeting on the MiHIN website.
- All attendees are muted
- Participating in the forum
 - Ask questions and make comments using the WebEx Chat
 - Presenters will answer your question via chat after each segment, or the moderator will read your question aloud towards the end of the webinar.
 - All unanswered questions today will be answered via email to all attendees.

- Chat Controls
 - On the right-side of your screen





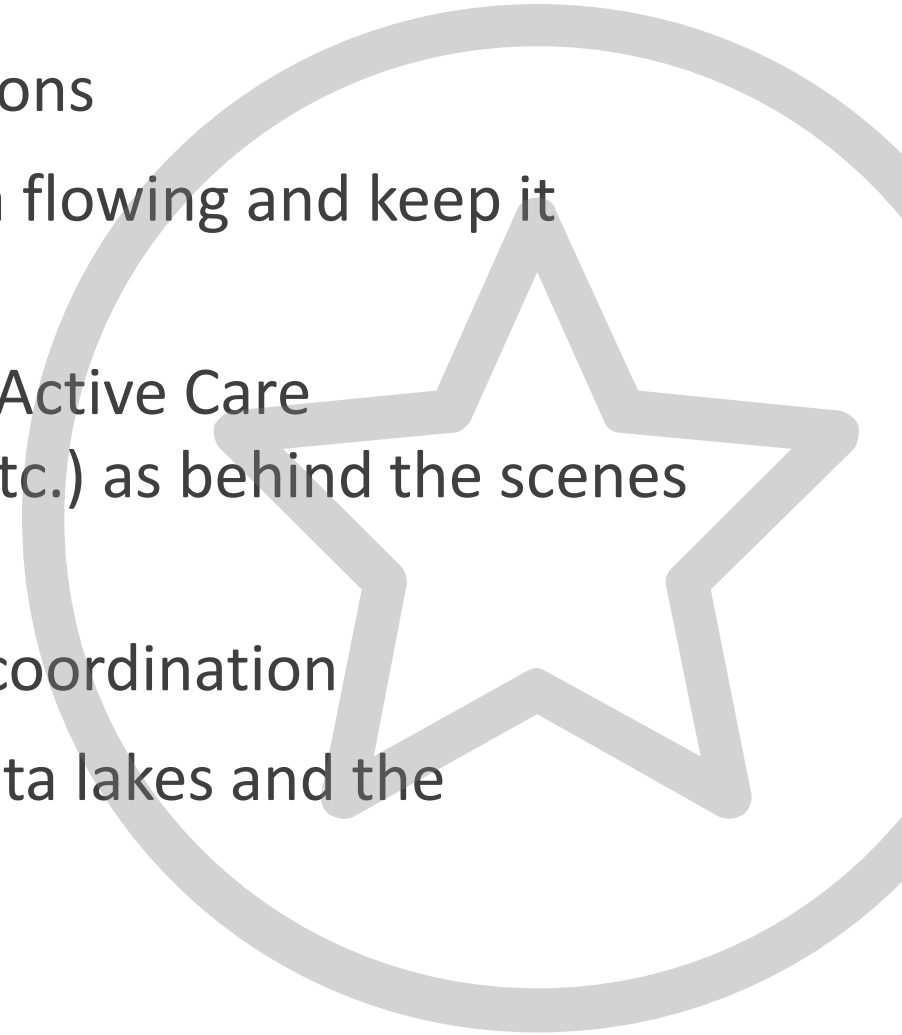
Michigan Health Information Network Shared Services (MiHIN)

MiHIN is Michigan's initiative to continuously improve healthcare quality, efficiency, and patient safety by promoting secure, electronic exchange of health information. MiHIN represents a growing network of public and private organizations working to overcome data sharing barriers, reduce costs, and ultimately advance the health of Michigan's population.

MiHIN is a
network for sharing health
information statewide for Michigan

MiHIN's Five Focus Areas

1. Convening people to figure out functional solutions
2. Champion Statewide Use Cases to fairly get data flowing and keep it moving securely among all legitimate parties
3. Operate as a Shared Services (Health Directory, Active Care Relationships, Security, Legal, Client Matching, etc.) as behind the scenes infrastructure
4. Providing tools to support daily workflows and coordination
5. Reporting, Conformance, and Analytics from data lakes and the longitudinal health record





Today's Agenda

01

● **Welcome**
Tracy Webb

02

● **Overview of MiGateway Conformance Module**
Krystal Schramm

03

● **DirettoReg: Making Compliance Easier & Free**
Michael Taylor

04

● **Announcements**
Tracy Webb

05

● **Q&A**
All – facilitated by Katelyn Kaliszewski





Conformance Module

Krystal Schramm
Product Manager
krystal.schramm@mihin.org

AGENDA

01

Conformance

02

ADT Conformance Reports

03

C-CDA Conformance Reports

04

Q & A



MiHIN Conformance

Data Quality Standards – Conformance Standards

- ✓ ADT (Admission, Discharge, Transfer) events
- ✓ C-CDA (Consolidated Clinical Document Architecture)



Why does it matter?

Conformance standards are designed to continually improve the data that flows through MiHIN, ensuring it is complete and actionable when it's received by the practitioners using the information.

Conformance Module

Automation and Self-Service

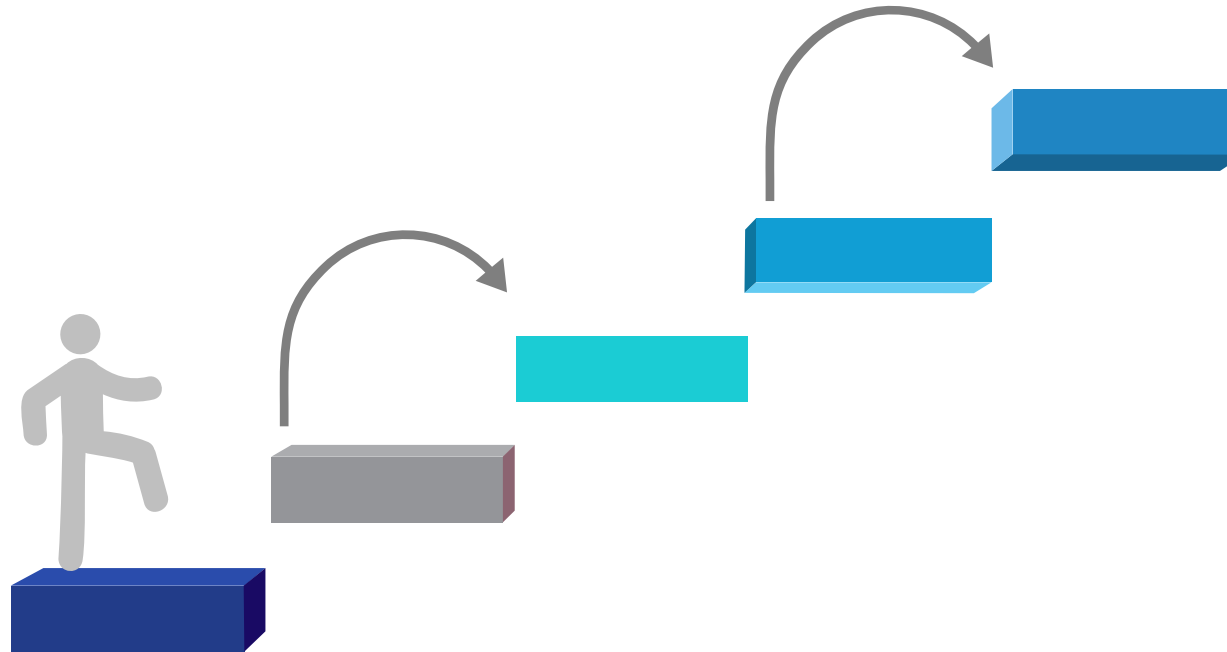


Functionality:

- 1) Displays Conformance Reports –overall conformance scores for each category – do not contain PHI
- 2) Ability to view and download live production messages of the message type in question (ADTs or C-CDAs) – live messages that contain PHI “fallout examples”

Improving Conformance Scores

Utilizing Conformance Module



ADT Conformance

- Complete routing
- Complete mapping
- Adherence to coding standards

C-CDA Conformance

- Routing of all fields in C-CDA

Conformance Module

[ADT Conformance Overview for Hospitals](#)[ADT Conformance Report for SNFs](#)[ADT Conformance Report for Hospitals](#)[ADT Fallout Report](#)

Filter

Hospital ADT Conformance Report

Hospital ADT Conformance Population R...

Controls

Facility

Blue Star Hospital

Period of Interest

Custom Period

Start Date (Custom Period O...

End Date (Custom Period On...

2020-07-10 00:00

2020-07-20 00:00

ADT Conformance Report for Hospitals

Provides an overview at the sender level of Overall ADT Conformance Score, along with the scores (population/mapping/correct coding) rates of the various constituent fields.

Overall Conformance Score

48.1%

Overall ADT Conformance Score

Indicates overall ADT data quality.

Color-coded by fields conformant across all relevant dimensions (Population, Mapping, etc).

0-14 (Red); 15-25 (Yellow); 26 (Green).

Conformance Module

ADT Conformance

C-CDA Conformance

ADT Conformance Overview for Hospitals

ADT Conformance Report for SNFs

ADT Conformance Report for Hospitals

ADT Fallout Report

Filter

«

Overall Conformance Report

Population Report: Routing Fields

Population Report: Mapping Fields

Population Report: Correct Coding Fields

Mapping Report

Correct Coding R »

Controls

Group Type

All

▼

Group Name

All

▼

Level of Aggregation

Group

▼

Period of Interest

Custom Period

▼

Start Date (Custom Period Only)

2020-07-10 00:00

End Date (Custom Period Only)

2021-07-20 00:00

Peer Group	Facility / Group	Overall Conformance Score
N/A	Super Demo Affiliate Network	85.2%

Conformance Module



Controls

Facility/Group
Silver_Triangle_Medical_Center

Trigger Type(s)
A01

Search Period Start Date
2020-03-01

Search Period End Date
2021-07-01

Field of Interest
PID-5.2: Patient First Name

Messages to Find for Field
Find Conformant Messages

Field of Interest (Secondary)
N/A

Messages to Find For Field (Secondary)
N/A

ADT Conformance Fallout Dashboard

Use the filters to find messages within the last 30 days which meet specified conformance criteria.

Message Date	Facility / Group	Date-Hour Received by HIN	Message Control ID (MSH-10)	Trigger Type	Message Retrieval URL
May 12, 2021	Silver Triangle Medical Center	May 12, 2021 4:00pm	213680410	A01	s3://mihin-adt-datalake-v2-raw-files-preprod/raw_hl7/parser_v2_1_0/2021/05/
May 12, 2021	Silver Triangle Medical Center	May 12, 2021 4:00pm	213680438	A01	s3://mihin-adt-datalake-v2-raw-files-preprod/raw_hl7/parser_v2_1_0/2021/05/
May 12, 2021	Silver Triangle Medical Center	May 12, 2021 4:00pm	213680685	A01	s3://mihin-adt-datalake-v2-raw-files-preprod/raw_hl7/parser_v2_1_0/2021/05/
May 12, 2021	Silver Triangle Medical Center	May 12, 2021 4:00pm	213681599	A01	s3://mihin-adt-datalake-v2-raw-files-preprod/raw_hl7/parser_v2_1_0/2021/05/
May 12, 2021	Silver Triangle Medical Center	May 12, 2021 4:00pm	213681602	A01	s3://mihin-adt-datalake-v2-raw-files-preprod/raw_hl7/parser_v2_1_0/2021/05/
May 12, 2021	Silver Triangle Medical Center	May 12, 2021 4:00pm	213682357	A01	s3://mihin-adt-datalake-v2-raw-files-preprod/raw_hl7/parser_v2_1_0/2021/05/
May 12, 2021	Silver Triangle Medical Center	May 12, 2021 4:00pm	213683318	A01	s3://mihin-adt-datalake-v2-raw-files-preprod/raw_hl7/parser_v2_1_0/2021/05/
May 12, 2021	Silver Triangle Medical Center	May 12, 2021 4:00pm	213683474	A01	s3://mihin-adt-datalake-v2-raw-files-preprod/raw_hl7/parser_v2_1_0/2021/05/

File Path

Enter file path for message to download




Download

Powered by QuickSight

Conformance Module

MedRec Conformance Report

[MedRec Fallout Report](#)



Conformance Report for Hospitals | Overview Report - Patient Fields | Overview Report - Visit Fields | Overview Report - Provider & Discharge F...

Controls

Date Filtering Type
Custom Range

Facility
Green Square Hospital

Start Date (Custom Range)
2021-03-01

End Date (Custom Range)
2021-05-31

Attending Provider Information

Prov. First Name	Prov. Last Name	Prov. NPI	Prov. Phone
93.33%	93.33%	93.33%	80%

Visit Information

V. ID	V. Encounter Type	V. Chief Complaint	V. Diagnosis Code	V. Diagnosis Description
100%	100%	100%	0%	100%

Conformance Module

MedRec Conformance Report

MedRec Fallout Report

Controls

Facility

Blue Star Hospital

Date Filtering Type

Custom Range

Start Date (Custom Range)

2020-04-01

End Date (Custom Range)

2021-05-31

Conformance Field of Interest

Attending Provider First Name

Conformance Status

All

MedRec Fallout Report

Facility	file_id	Is Field Conformant?
Blue Star Hospital	179820088	1
	179820091	1
	181197064	1
	181560609	1
	181697192	0
	181697193	0
	181697195	0
	181697196	0
	181697197	1

The Future of the Conformance Module

STEP 01

Creation of automated reports available in self-service fashion in Conformance Module – Complete!

STEP 03

Product Roadmap -
Plan for future enhancements



STEP 02

Gather feedback from stakeholders
– Ongoing

STEP 04

Complete future enhancements -
Future state of module



QUESTIONS?



DirettoReg: Making Compliance Easier & Free

Michael Taylor
Product Marketing Manager
michael.taylor@mihin.org

DirettoReg™

Making Compliance East & Free

A free tool that reduces provider organization burden to communicate and register their selected types of endpoints, such as Direct Secure Messaging address, FHIR URL 4.0.1, Connect URL, etc. with the NPPES.

DirettoReg™ is the free-of-charge version of MiHIN's more robust secure messaging software, Diretto, which enables patients, providers, specialists, health plans, pharmacists, hospital, and others to securely send and receive protected health information.



Visit mihin.org/Diretto for more information



QUESTIONS?

Michael Taylor
Product Marketing Manager
michael.taylor@mihin.org

Sr. Regional Account Executives



Stephanie Miller

Stephanie.Miller@mihin.org
West Michigan



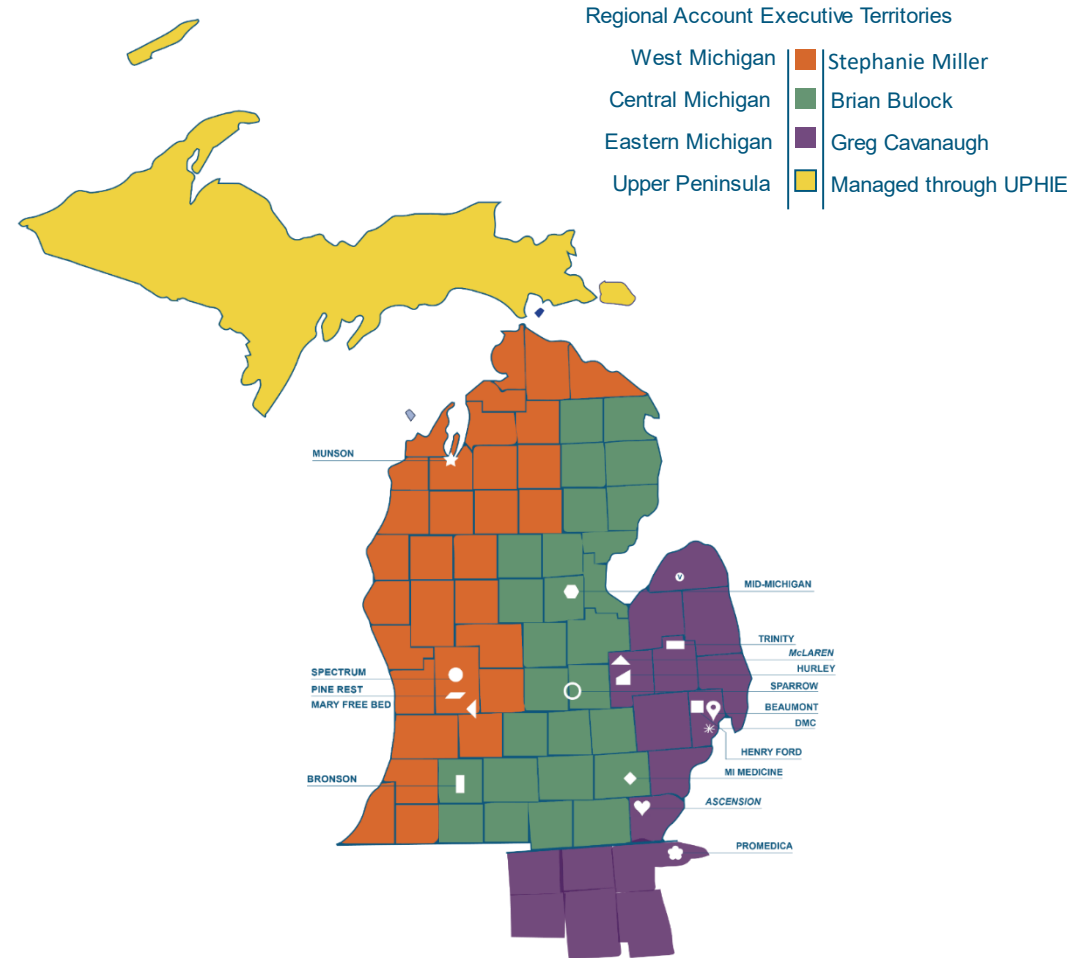
Bryan Bulock

517.749.2637
Bryan.Bulock@mihin.org
Central Michigan



Greg Cavanaugh

586.596.8296
Greg.Cavanaugh@mihin.org
Eastern Michigan



Corporate Account Executives



Kim Bachelder
Corporate Account Executive
Kim.bachelder@mihin.org
Serving State of Michigan



Katherine Olds
Corporate Account Executive
Katherine.olds@mihin.org
Serving Michigan Medicine



Bo Borgnakke
Emerging Solutions Manager
Borgnakke@mihin.org
Serving Blue Cross Blue Shield



Megan Gibbs
Corporate Account Executive
Megan.Gibbs@mihin.org
Serving Ascension, McLaren,
Munson, and Trinity



Matt Stromer
Product Sales Manager
Matt.Stromer@mihin.org
Serving Medicaid Health
Plans

The Interface

Remember to check out our monthly newsletter, The Interface, at: mihin.org/the-interface

Next edition of The Download

July 6, 2021 at 11am

Legacy Legal Outreach

Please reach out to your Account Executive or submit inquiries to help@mihin.org if you have questions

Imaging Workshop Series

Concluded on May 25, 2021. A big thank you to all who participated and provided feedback!

Connecting Michigan For Health and More

Virtual Care (Telehealth & Patient Reported Outcomes) Workshop. June 24 from 9am-1pm. Register at: <https://www.eventbrite.com/e/connecting-michigan-for-health-and-more-event-series-tickets-114418659290>

Announcements

Tracy Webb

Outreach Manager

Tracy.webb@mihin.org



QUESTIONS?

Join us for the next **DOWNLOAD** on

July 6, 2021



THANK YOU!

Tracy Webb

Outreach Manager

Tracy.webb@mihin.org