

July 13, 2021

THE DOWNLOAD

A monthly webinar diving into the intersection of healthcare and technology





Tracy Webb
Outreach Manager
MiHIN

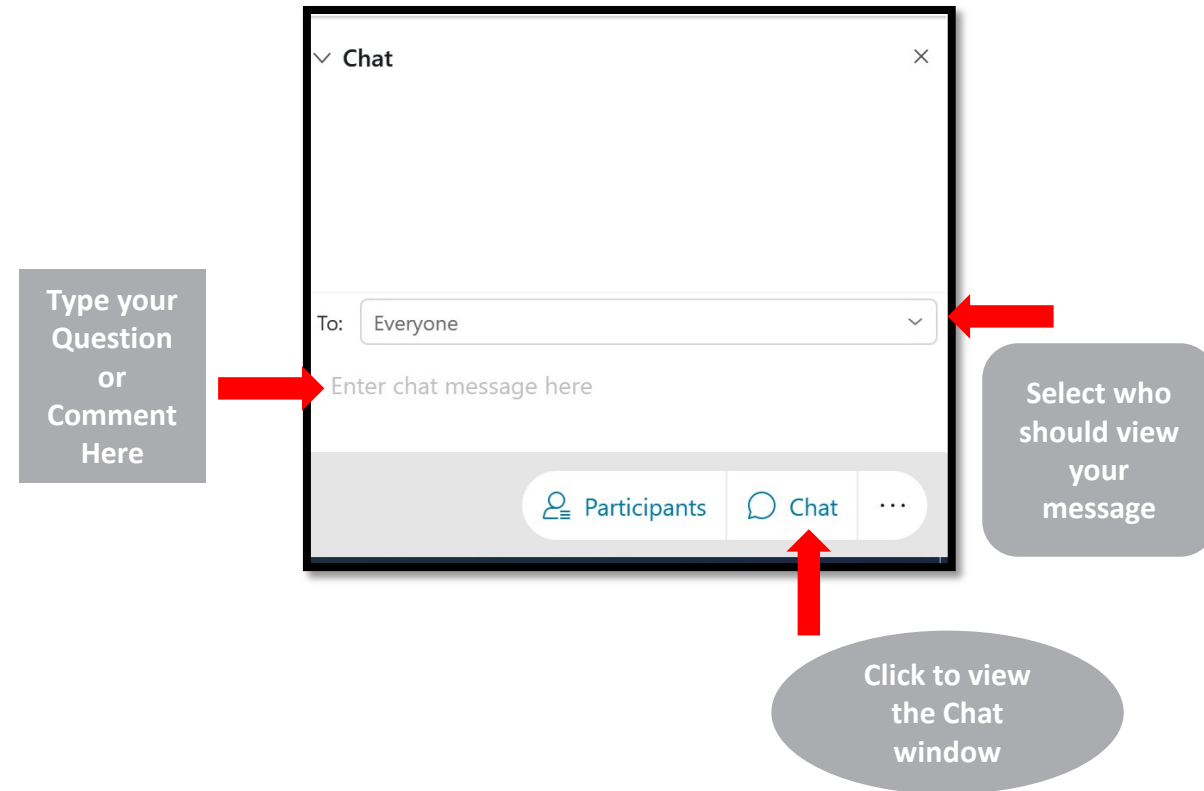
- **Tracy (Facilitator)**
- **Katy (WebEx Chat Moderator)**

Welcome to THE DOWNLOAD

Let's Get Started...

- This session is being recorded and will be available after the meeting on the MiHIN website.
- All attendees are muted
- Participating in the forum
 - Ask questions and make comments using the WebEx Chat
 - Presenters will answer your question via chat after each segment, or the moderator will read your question aloud towards the end of the webinar.
 - All unanswered questions today will be answered via email to all attendees.

- Chat Controls
 - On the right-side of your screen





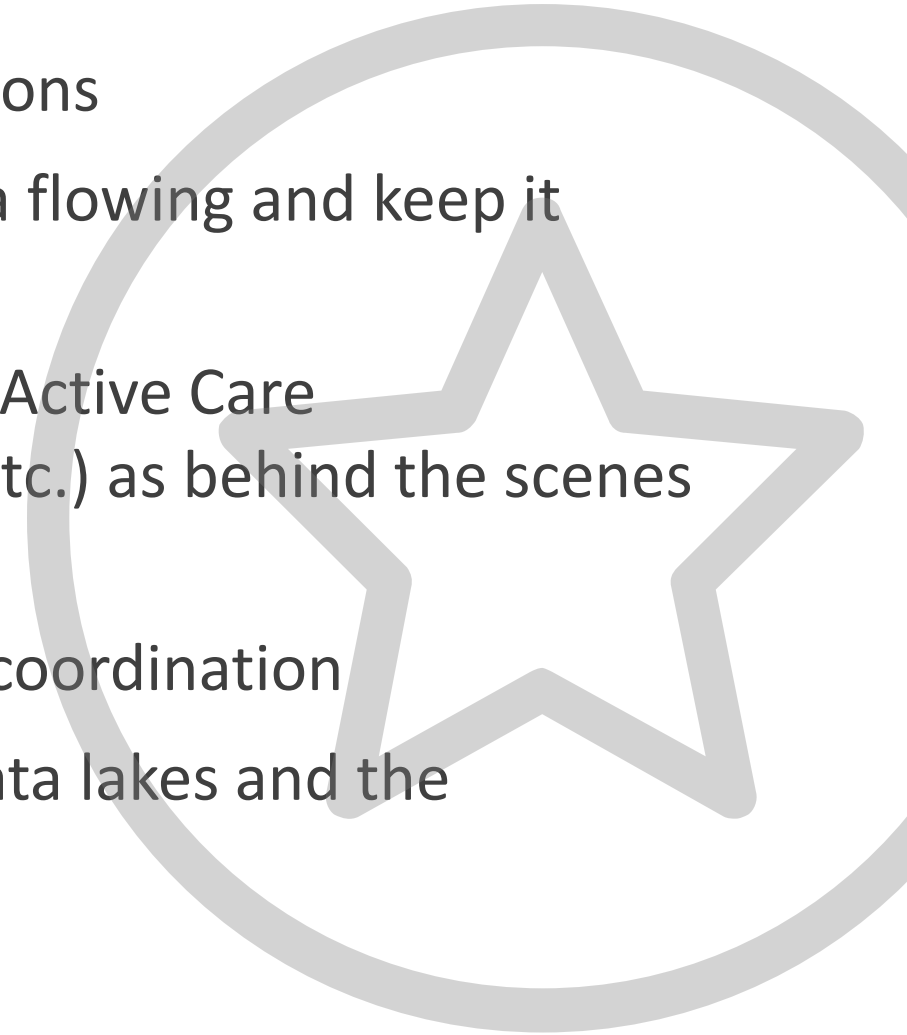
Michigan Health Information Network Shared Services (MiHIN)

MiHIN is Michigan's initiative to continuously improve healthcare quality, efficiency, and patient safety by promoting secure, electronic exchange of health information. MiHIN represents a growing network of public and private organizations working to overcome data sharing barriers, reduce costs, and ultimately advance the health of Michigan's population.

MiHIN is a
network for sharing health
information statewide for Michigan

MiHIN's Five Focus Areas

1. **Convening** people to figure out functional solutions
2. Champion Statewide **Use Cases** to fairly get data flowing and keep it moving securely among all legitimate parties
3. Operate as a **Shared Services** (Health Directory, Active Care Relationships, Security, Legal, Client Matching, etc.) as behind the scenes infrastructure
4. **Providing tools** to support daily workflows and coordination
5. **Reporting, Conformance,** and **Analytics** from data lakes and the longitudinal health record



Today's Agenda

01

● **Welcome**
Tracy Webb

03

● **Announcements**
Tracy Webb

02

● **HIT Roadmap Overview**
Kim Bachelder

04

● **Q&A**
All – facilitated by Katelyn
Kaliszewski

MICHIGAN 5-YEAR HEALTH IT ROADMAP

Created by CedarBridge Group on
behalf of MDHHS



THE PROCESS

Environmental Scan

Define stakeholders and domains

Gather input through stakeholder meeting and surveys

Analyze & Synthesize Data

Validate Findings

Create Recommendations

Prioritize Recommendations & Determine Next-steps



THE STAKEHOLDERS



- Hospital and Health Systems
- Ambulatory Providers
- Behavioral Health Providers
- Social Services Organizations
- EMS Providers
- Public Health Organizations
- Long Term and Post Acute Care Organizations
- Health Plans
- Consumers

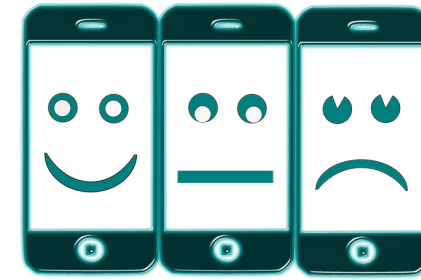


FINDINGS

What did the data show?



Technology *capabilities vary widely* depending on the size and type of provider, as do competencies, system functionality, and technical support resources



Access to *mobile devices* and *reliable high-speed internet* connections varies based on size, type, and location of organization, resulting in a "digital divide"

CURRENT STATE-WIDE OVERVIEW



Most *hospitals, health systems* and professionals have *taken advantage of EHR incentive* programs



Larger, well-resourced organizations *exchange more data*, and more data types, than smaller organizations and data they receive has *greater integration with their clinical systems*



RECOMMENDATIONS

What should we do with the data?

RECOMMENDATIONS 1 & 2



Identify Champions and Empower Leaders...

...from within MDHHS with the skills, passion, and authorities to drive implementation of the Roadmap and future initiatives involving health IT.



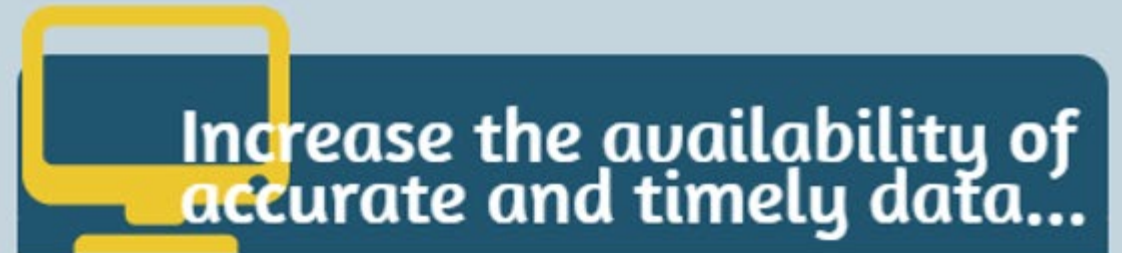
Adopt standards for SDoH...

...to identify an individual's needs and their health risks related to housing, food security, transportation, childcare, and other social and environmental factors.

RECOMMENDATIONS 3 & 4



...with state investments to make affordable high-speed broadband service available in all census tracts of the state.



...to protect population health by establishing a public health gateway at MiHIN to support bidirectional exchange of data with the major MDHHS public health data systems.

RECOMMENDATIONS 5 & 6



Develop an HIE Onboarding and Technical Assistance Program...

...to support several types of healthcare provider and social services organizations in Michigan with HIE connections and technical assistance services.



Build on previous work done by MDHHS and MiHIN...

...by drafting a business case that includes a cost/benefit analysis for the development of Statewide Identity Information and Authorization Services.

NEXT-STEPS



- Stakeholder Feedback
- Recommendation Prioritization
- Leadership Approval
- Secure Funding Sources
- Secure Resources

QUESTIONS ABOUT THE ROADMAP?

CONTACTS -

Michigan Roadmap Email Address: miroadmap@cedarbridgegroup.com

Don Ross – CedarBridge Group: [donald.ross@cedarbridgegroup](mailto:donald.ross@cedarbridgegroup.com)

Erin Mobley – MDHHS: MobleyE2@michigan.gov

ADDITIONAL RESOURCES –

Michigan Health Information Technology Commission Website:
https://www.michigan.gov/mdhhs/0,5885,7-339-71551_5460_44257---,00.html



MiHIN ALIGNMENT

Brief Roadmap Overview

July 2021



WHAT WE HEARD

HITC eScan Report



KEY PRIORITIES NEXT 18 MONTHS

FY2021-FY2022

Honoring Choices

- Statewide Electronic Consent Management
- Advance Care Planning
- Consumer Education and Outreach

21st Century Cures Act Compliance

- InterOp Station
- Enhance APIs
- Patient Access

Data Access and Data Usability

- Advance Data Management Services
- Conformance Reporting
- USCDI Core Requirements



Population Health & Public Health Response

- Governance Committee
- Use Case
- Reporting and Query
- Attributes

Standardized SDoH Information

- Increase SDoH Screening data sharing
- National Standard Alignment
- Social Care Record

Health Equity

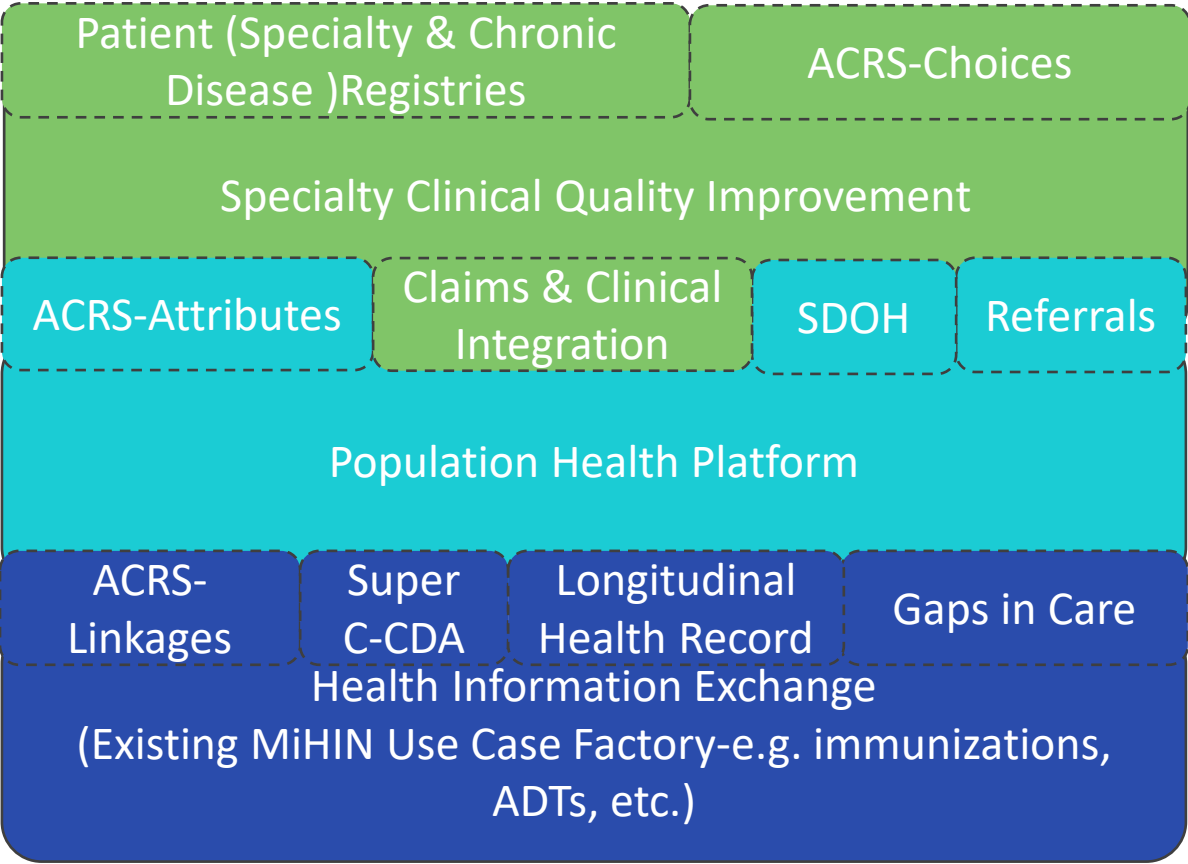
- Collaborative Quality Improvement
- CQI Data
- CBO Integration

ESTABLISHING STATEWIDE INFRASTRUCTURE

Health Equity and Next
Generation Quality
Improvement

Population Health
Activity

HIE DEV, Data
Management, Etc.
Activities





QUESTIONS?

Kim Bachelder

kimberly.bachelder@mihin.org

Sr. Regional Account Executives



Stephanie Miller

Stephanie.Miller@mihin.org
West Michigan



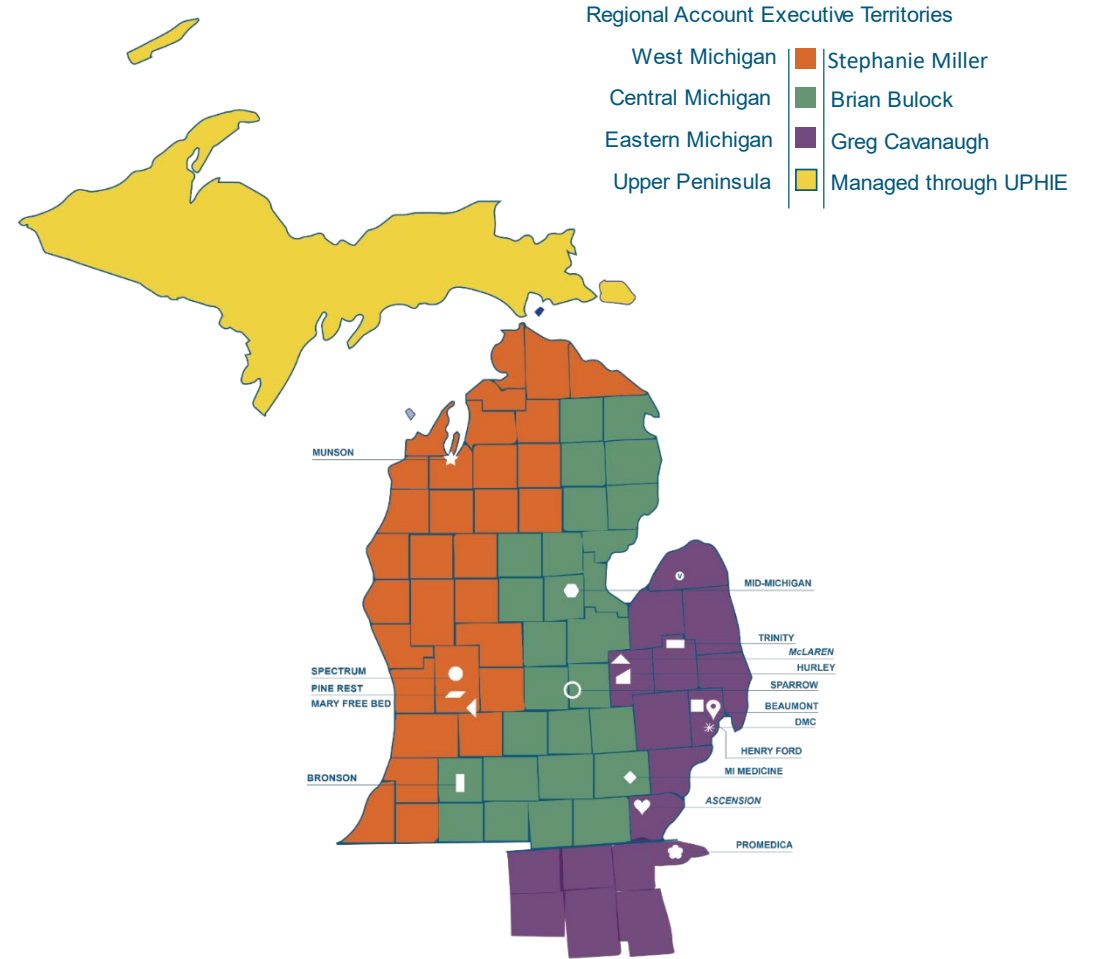
Bryan Bulock

517.749.2637
Bryan.Bulock@mihin.org
Central Michigan



Greg Cavanaugh

586.596.8296
Greg.Cavanaugh@mihin.org
Eastern Michigan



Corporate Account Executives



Kim Bachelder
Corporate Account Executive
Kim.bachelder@mihin.org
Serving State of Michigan



Katherine Olds
Corporate Account Executive
Katherine.olds@mihin.org
Serving Michigan Medicine



Bo Borgnakke
Emerging Solutions Manager
Borgnakke@mihin.org
Serving Blue Cross Blue Shield



Megan Gibbs
Corporate Account Executive
Megan.Gibbs@mihin.org
Serving Ascension, McLaren,
Munson, and Trinity



Matt Stromer
Product Sales Manager
Matt.Stromer@mihin.org
Serving Medicaid Health
Plans

The Interface

Remember to check out our monthly newsletter, The Interface, at: mihin.org/the-interface

Next edition of The Download

August 3, 2021 at 11am

Advance Care Planning Announcement

Please reach out to our help desk at help@mihin.org if you have questions. Individuals wishing to upload their own documents into secure storage may do so at <https://mydirectives.com/>

Announcements

Tracy Webb

Outreach Manager

Tracy.webb@mihin.org



QUESTIONS?

Join us for the next **DOWNLOAD** on

August 3, 2021



THANK YOU!

Tracy Webb

Outreach Manager

Tracy.webb@mihin.org