



Accelerating the Learning Health System with Process Interoperability

What

Power of Community

InterOp.Community is an emerging collaboration to advance the healthcare interoperability agenda via the use of open platforms and open-source software.

Who

Professional societies, vendors, healthcare and government orgs

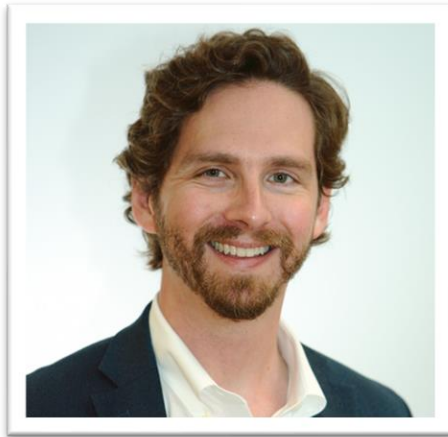
Promote open standards to share, adopt and allow patient centric pathways to operate across traditional health IT boundaries.

Why

It takes 17 years for best practices to move into clinical workflows

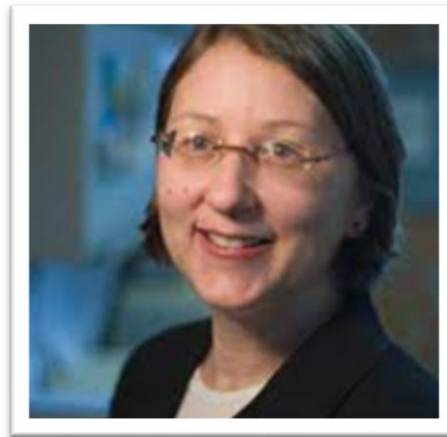
As a patient, provider or payer, is that fast enough for you? If not then join our community and help accelerate our shared velocity towards the learning health.

The Experts



Ben Cushing

*Federal Health & Science
Lead
Red Hat*



Mary Kratz

*Executive Vice President
Interoperability Institute*



Amit Trivedi

*Director, Informatics & HIT
Standards
HIMSS*

Learning Health Systems

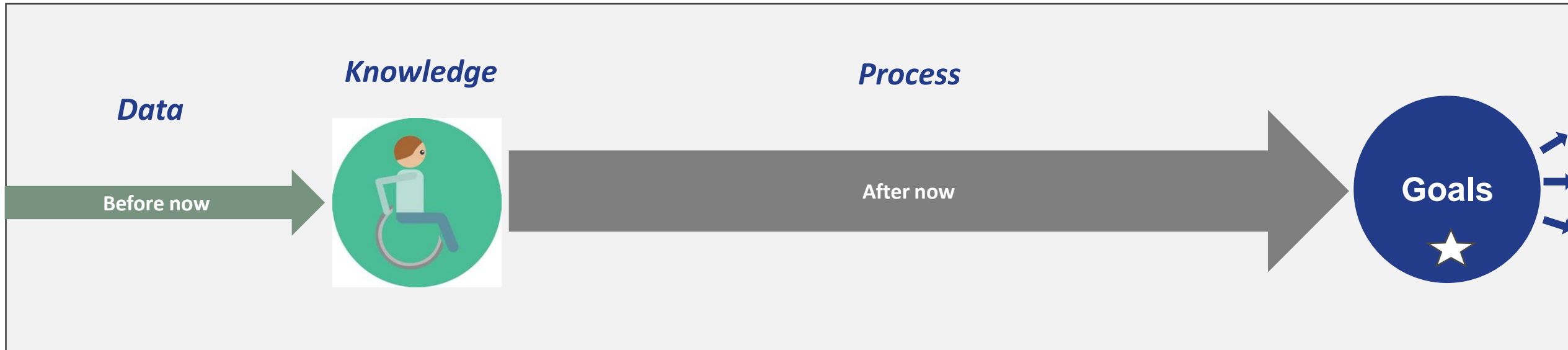


“

Healthcare systems in which knowledge generation processes are embedded in daily practice to produce *continual improvement* in care.

US Institute of Medicine

Healthcare Interoperability is much more than data...

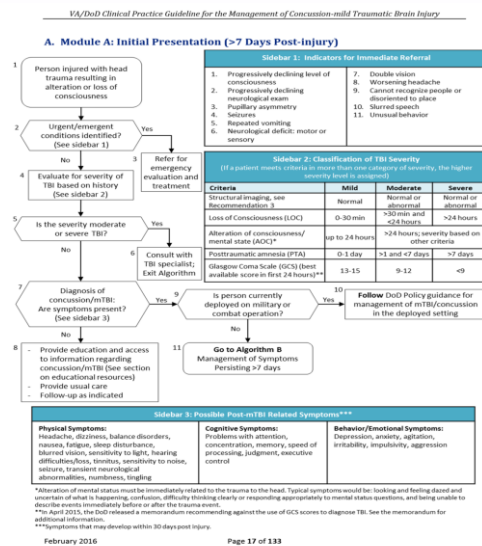


The patient journey is a goal directed activity

Enabling the Learning Health System

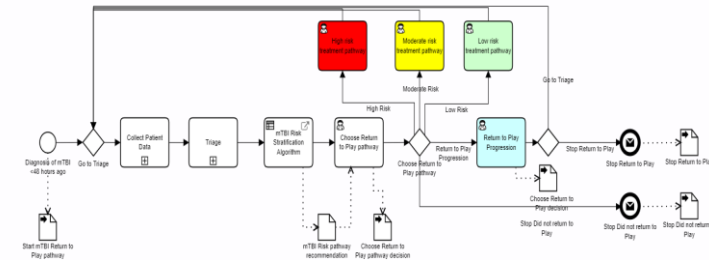
Care **with** Boundaries

Clinical Practice Guidelines are stuck on paper



Care **without** Boundaries

CPGs are automated across clinical workflows



Barriers to the LHS



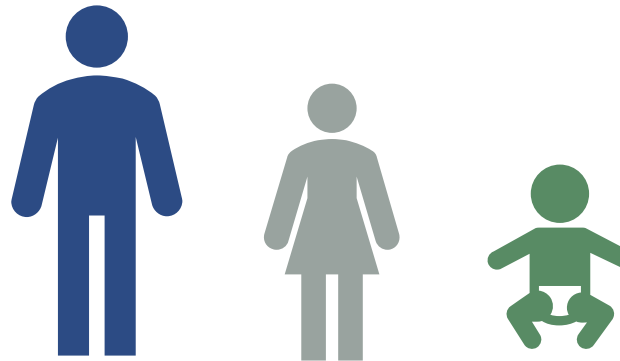
MELD.Interop.Community



- Open-source healthcare sandbox called 'MELD'
- Free sandbox open to the world based on MELD Source Code
- Populated with synthetic FHIR® data
- Used for:
 - Research solutions
 - Educate & Training venues
 - Test tools & Standards Development
 - Collaborate on Use Case Demonstration
 - Create a Reference Implementation



Another key part of what Communities of Practice do is sponsor the creation of personas and synthetic data called “DATA PACKS”



Meet Alani



Alani Lee MSW

1

Stage 4 Breast Cancer

Alani is post-op for a partial mastectomy. Her metastatic brain lesions require high dose steroids to manage the cerebral swelling. She has been given a 22% chance of living past 5 years.

2

High Sepsis Risk

Due to the recent surgery, high dose steroids and history of Staphylococcus infections, she has a high baseline risk for developing life threatening sepsis. A hospital during the Covid 19 pandemic is not a safe environment for her recovery.

3

Rural Native Hawaiian

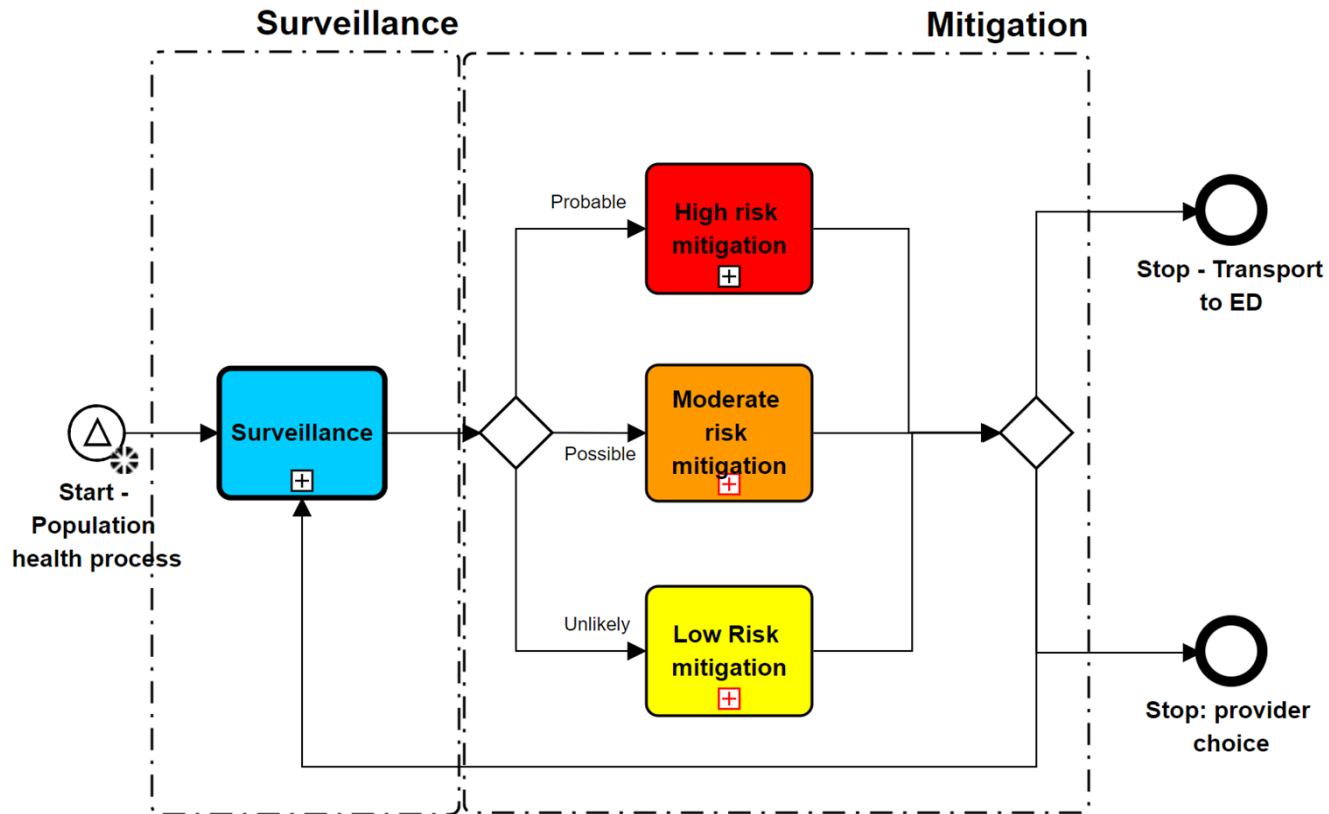
Strong community support but 153 miles from her surgical team.



Alanie's Goal

Get home as fast as possible to be with her community.

Population health risk surveillance & mitigation

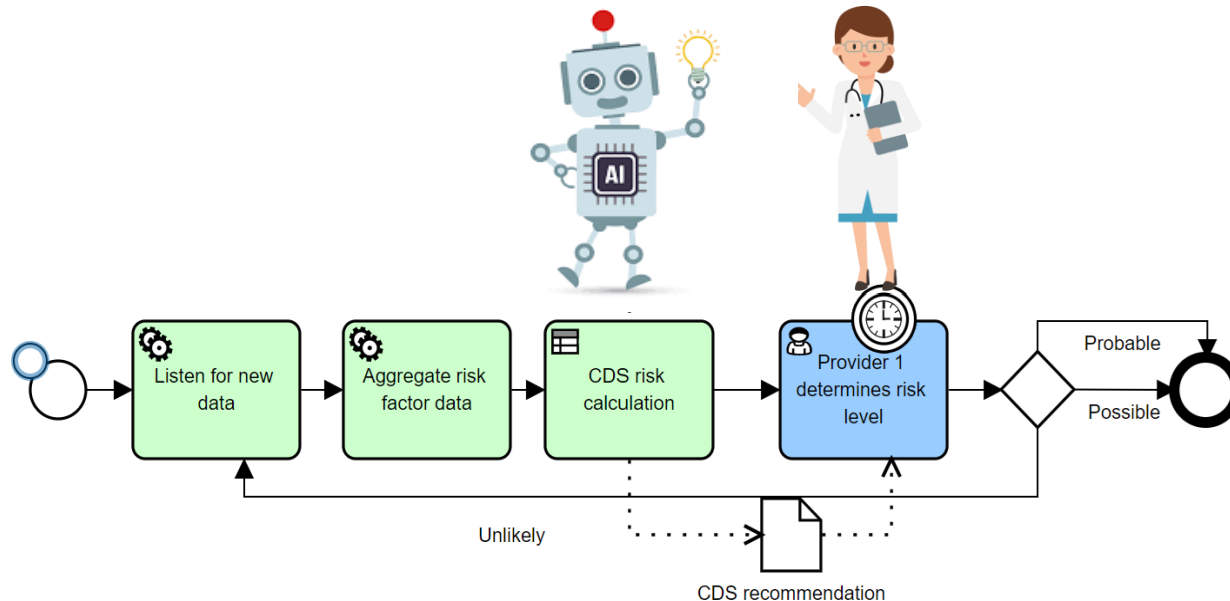


- Open Standards
- Best practices & process
- Patient centric across all boundaries
- Modular
- Scalable
- Secure

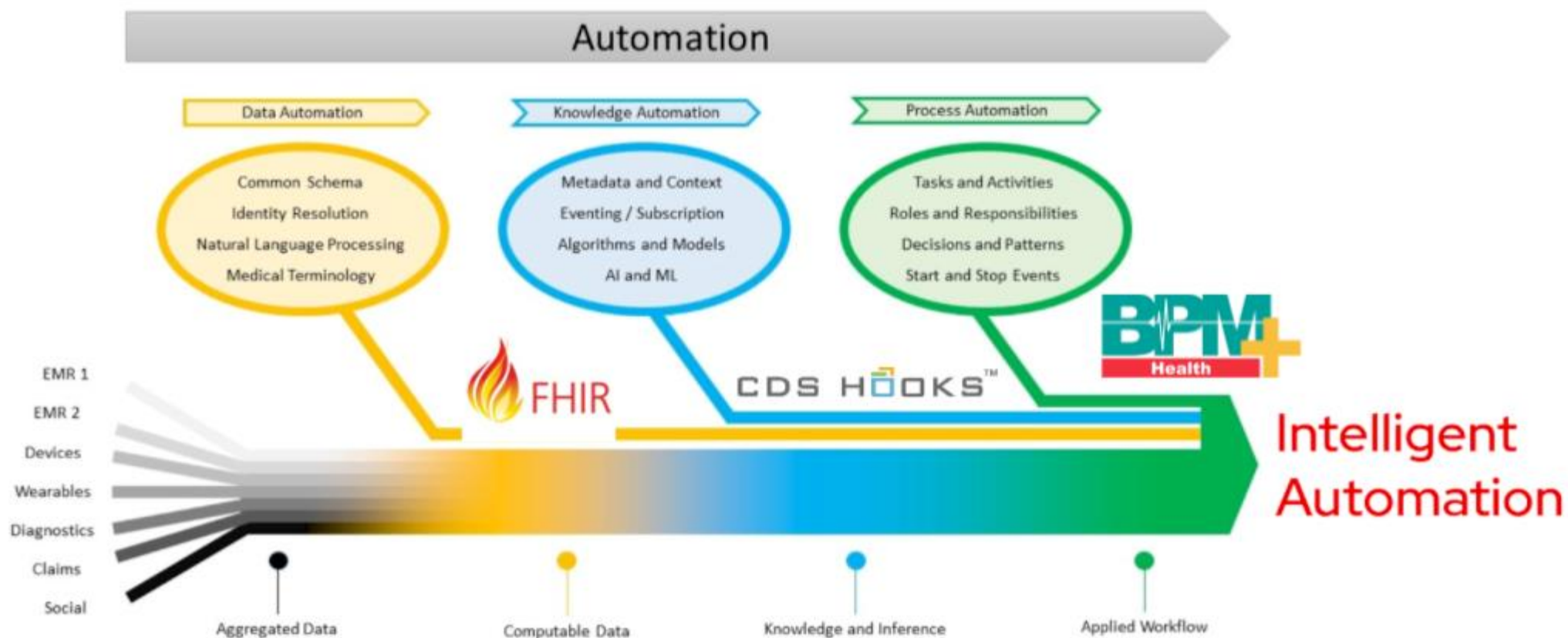


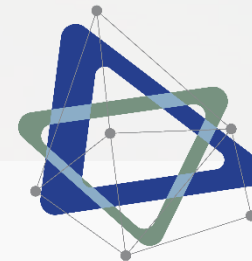


AI as Clinical Decision Support in provider workflows



- AI supporting Providers in areas of cognitive weakness
 - Listening for new data
 - Harmonizing data
 - Near real time risk calculation
- Reduces Noise & Frees Providers to focus on Patient care





Thank you!

Keyword: Grape