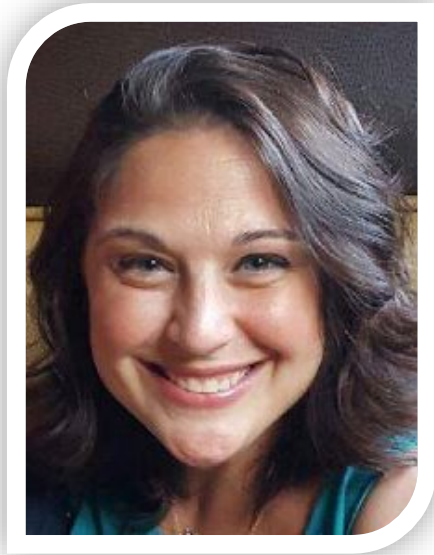


# BITS & BYTES

A monthly workshop where stakeholders can connect directly with MiHIN solutions' designers and managers.



BITS & BYTES



**Joanne B. Jarvi**

*Senior Director of Outreach and  
Market Communications*

MiHIN

- **Joanne Jarvi (Facilitator)**
- **Rachel Kelley (Webex Chat Moderator)**

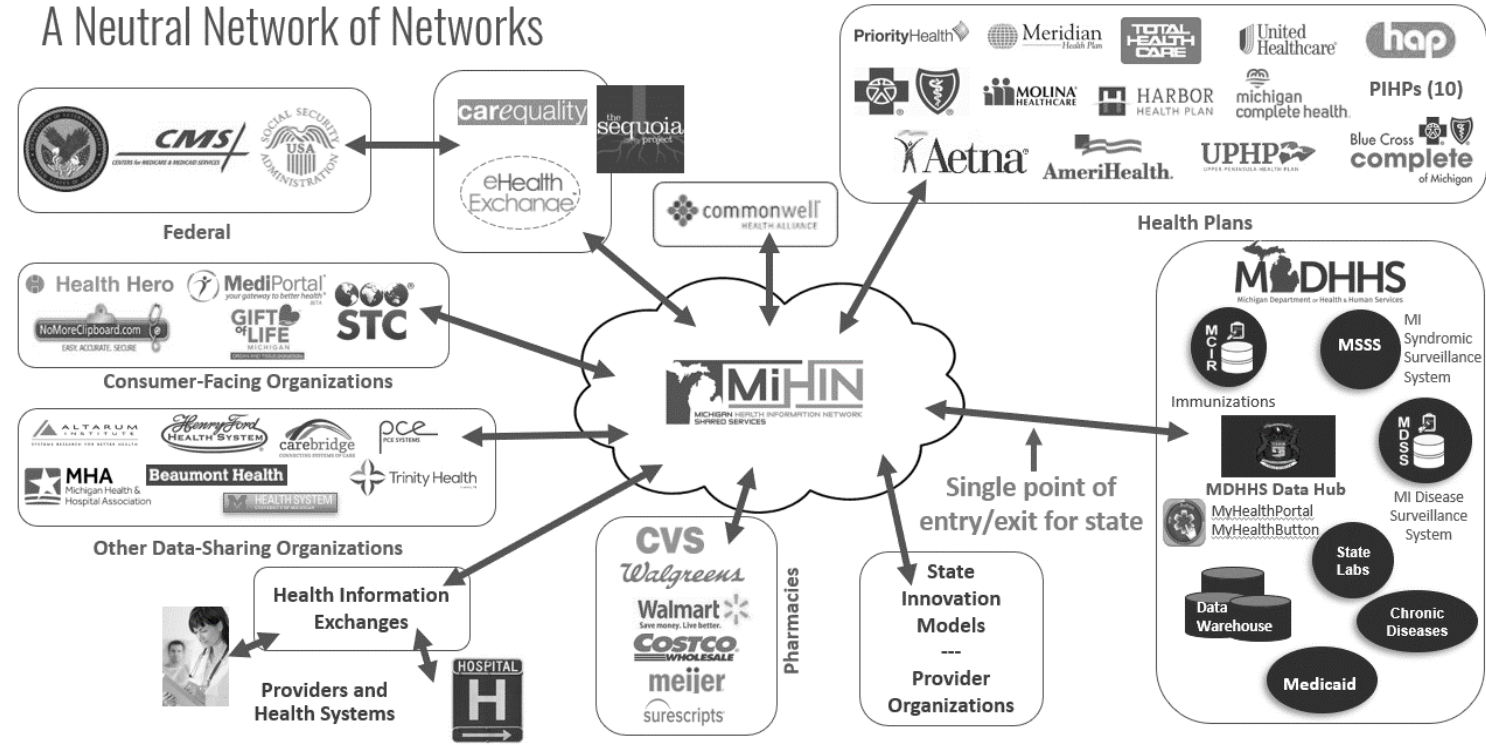


Michigan Health Information Network Shared Services (MiHIN) is a non-profit organization that provides technology and services to connect disparate sectors, *our stakeholders*, to securely share health information.

An unbiased data trustee, MiHIN does not provide health care services, produce health care data or compete in the marketplace.

Instead, we help convene to share vital health information to advance care, better outcomes and lower costs.

## A Neutral Network of Networks



*Technology is a tool. Humans are the energy. Technology allows humans to connect, communicate, and collaborate.*

**Are you currently working with these Solutions?**

**Which features are most valuable to you?**

**What important features are we missing?**

**What are you trying to solve by using employing our Solutions?**

**How would you rate ease of use?**

**How would you rate the value for money?**

**How could we improve our Solutions to better meet your needs?**



# Today's Agenda

01

## Welcome

Joanne Jarvi

02

## Care Convene

Chris Bailey, MiHIN Director of Consumer Health Strategy

02

## Message Delivery

James Noland, MiHIN Senior Product Marketing Manager and Product Architect

03

## Adjourn

Joanne Jarvi



## Care Convene

**Chris Bailey**

*Director of Consumer Health Strategy*





## Message Delivery

**James Noland**

*Senior Product Marketing Manager  
& Product Architect*





# Message Delivery



## Message Delivery

**Message Delivery allows participating organizations to electronically send and receive information via the statewide health information network (HIN) through a variety of methods including direct connections within an EMR, Direct Secure Message, API, or through access to an aggregated data lake.**

## Benefits



Leverages the Active Care Relationship service to reduce the lag time between care transitions



Encounter notifications provide timely updates for patient health events



Care Summaries and Medication Reconciliation messages provide a comprehensive summary of a health event

## Features

- Admit, discharge, and transfer notifications
- Exchange C-CDA
- Lab Information System Result Delivery
- Radiology Integration System Result Delivery
- Transcription Integration
- Diagnostic Imaging
- Receive External Lab Results
- Receive External Radiology Results
- Receive External Transcribed Documents
- Lab, Rad, Trans, Path messages improve the timeliness of relevant clinical information
- Data received is run through conformance reporting to maintain high quality standards
- Data delivered is valuable and actionable



**Are you currently working with these Solutions?**

**Which features are most valuable to you?**

**What important features are we missing?**

**What are you trying to solve by using employing our Solutions?**

**How would you rate ease of use?**

**How would you rate the value for money?**

**How could we improve our Solutions to better meet your needs?**



Join us for the next **The Download** on  
**Wednesday, February 16, 10:00-11:00 AM**

Join us for the next **Bits & Bytes** on  
**February 23, 2:00-3:00 PM**

**THANK YOU!**

