



# Social Care Data: What's data got to do with it?

Community Based  
Organizations

## AGENDA

10:00 – 10:25 a.m.

Presentation of Background  
and Purpose

10:30 – 11:30 a.m.

Break Out Rooms and Facilitated  
Discussion/Discovery/Feedback

11:30 – 12:00 a.m.

Regroup: Next Steps?

## HOUSEKEEPING



This session, and each breakout room, is being recorded

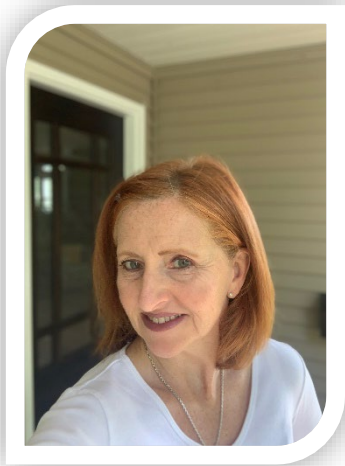


Please feel free to ask questions and make comments by  
unmuting or by using the chat function



Please take the time to complete the poll

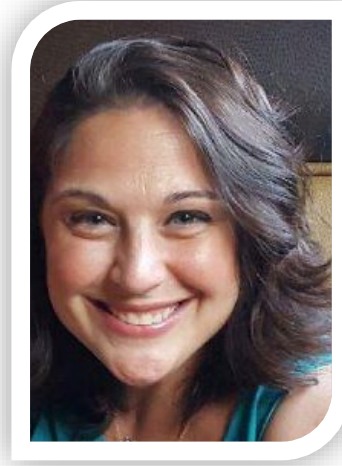
# MiHIN SDOH Program Team



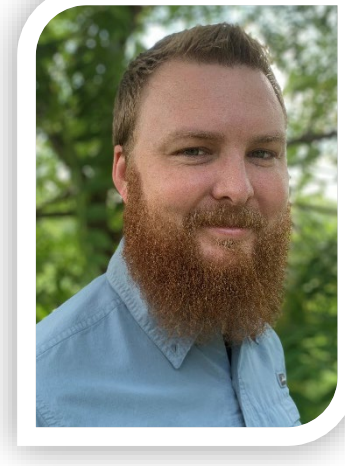
**Lisa Nicolaou**  
MiHIN SDOH  
Program Director



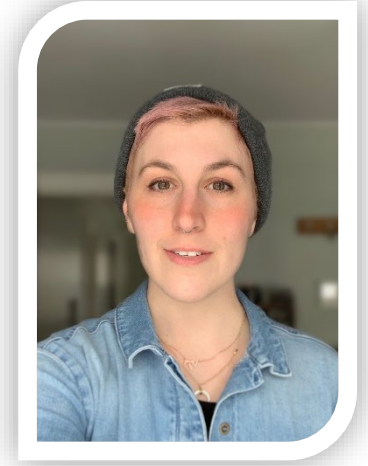
**Dr. Michael Klinkman**  
MiHIN SDOH  
Medical Director



**Joanne Jarvi**  
MiHIN Senior  
Director of  
Outreach and  
Market  
Communications



**Michael Taylor**  
MiHIN Senior  
Product  
Marketing  
Manager



**Sammie Madson- Olson**  
MiHIN SDOH  
Project Manager

## In Partnership With:



Michigan Association of  
United Ways



United Way  
for Southeastern Michigan

# Workshop Purpose:

- A series of conversations to identify barriers to cross-sector care and data exchange that impacts
  - Community based organizations and social care providers
  - Healthcare organizations
  - Government entities
- A concentrated opportunity to provide feedback towards a statewide social care data exchange strategy

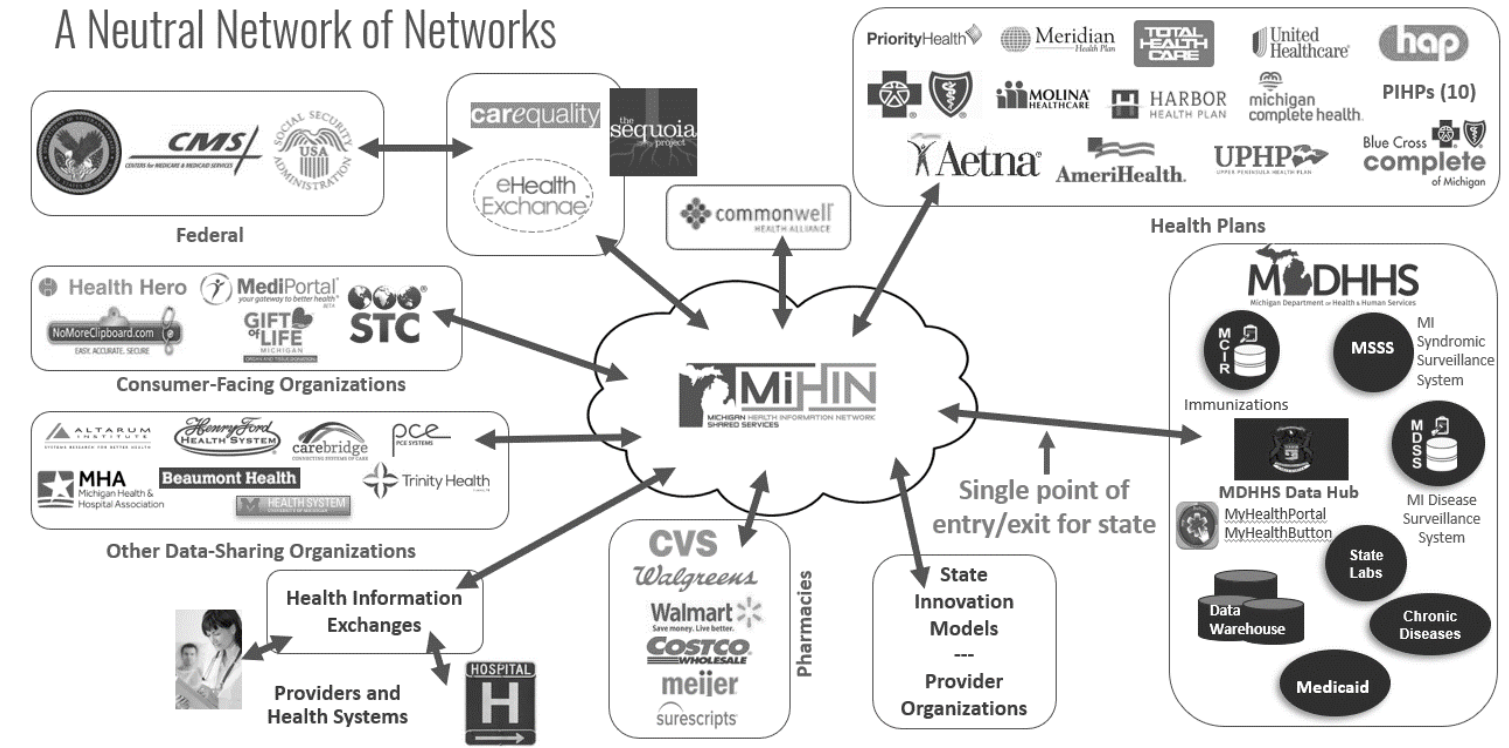




Michigan Health Information Network Shared Services (MiHIN) is a non-profit organization that provides technology and services to connect disparate sectors, our stakeholders, to securely share health information.

An unbiased data trustee, MiHIN does not provide health care services, produce health care data or compete in the marketplace.

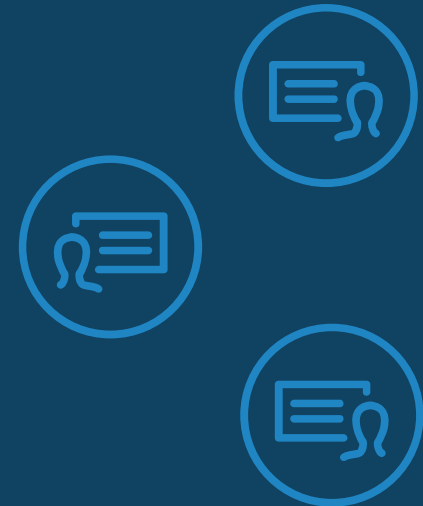
Instead, we help convene to share vital health information to advance better care, better outcomes and lower costs.



*Technology is a tool. Humans are the energy. Technology allows humans to connect, communicate, and collaborate.*

# Who is attending: Summary of attendees

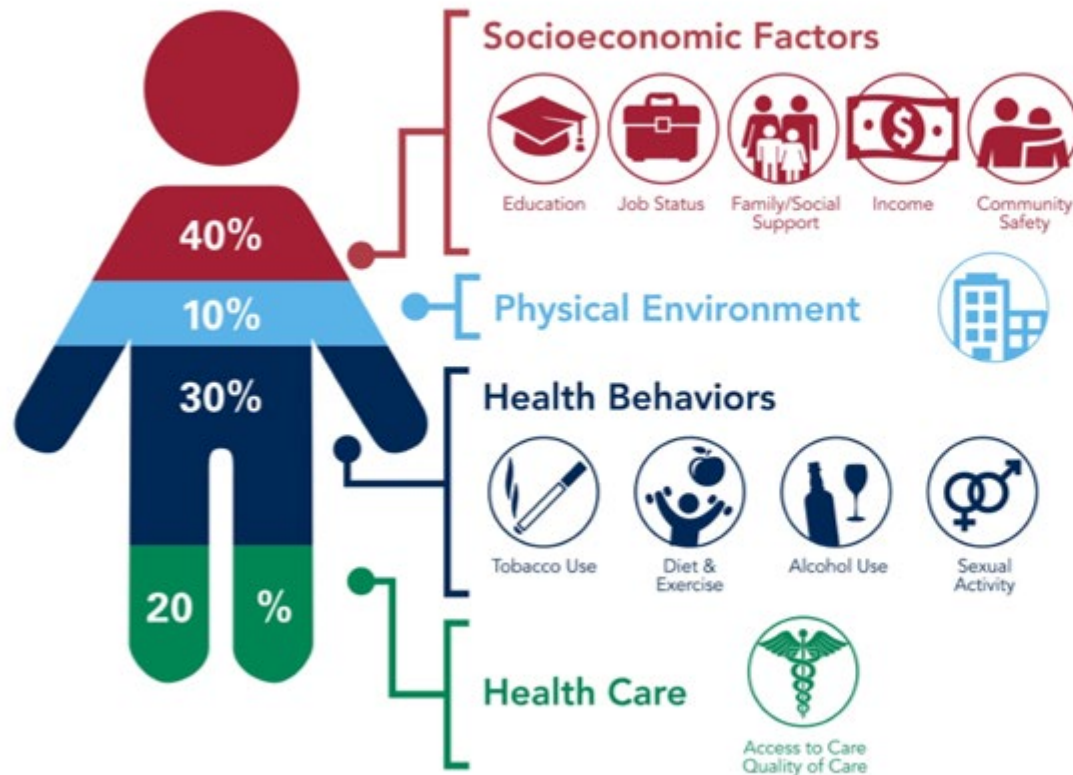
- |   |  |  |  |   |  |
|---|--|--|--|---|--|
| • A Brighter Way                              | Children   | • Area Agency on Aging of Northwest Michigan | • Wayne Metro Community Action Agency          | • Open Referral   | • NAMI Washtenaw County                            |
| • Access Health                               | • World in Harmony   | • Area Agency on Aging of Western Michigan   | • Oakland Family Services                      | • Region 2 Area Agency on Aging   | • Northwest Michigan Community Action Agency       |
| • Area Agency on Aging 1-B                    | • Oakland Livingston Human Service Agency                          | • Avalon Housing                             | • Lighthouse of Oakland County                 | • Shekinah Tabernacle Gospel Church   | • Senior Resources of West Michigan                |
| • Business Men & Women Social Club of Detroit | • The Farm at St Joe's Hospital                                    | • Brilliant Detroit                          | • Michigan Association of United Ways          | • Southeastern Michigan Health Association                                  | • Southeast Michigan Senior Regional Collaborative |
| • Cinnaire                                    | • MDHHS  | • Capital Area United Way                    | • Region IV Area Agency on Aging               | • Taste the Local Difference  | • The Salvation Army                               |
| • Detroit Community Care Network              | • Michigan Dept of Health and Human Services                       | • Community Action House                     | • ACL  | • UPCAP   | • Tri-County Office on Aging                       |
| • Genesee County Habitat for Humanity         | • CHRT   | • COTS                                       | • Area Agency on Aging                         | • Upper Peninsula Health Information Exchange (UPHIE)                       | • United Way of Bay County                         |
| • HAVEN                                       | • Greater Flint Health Coalition Inc.                              | • Easterseals Michigan                       | • BAISD  | • MDHHS-MCPD QIPD   | • Wayne Metro CAA                                  |
| • Housing Bureau for Seniors                  | • Greater Flint Health Coalition Inc.                              | • Food Bank Council of Michigan              | • Chaldean Community Foundation                | • AAA 1-B   | • Michigan Health Endowment Fund                   |
| • Independent                                 | • Health Net of West Michigan                                      | • HARVEST TIME CHRISTIAN FELLOWSHIP          | • Community Service Community Development Corp | • AAANM   | • 211  |
| • Joy Southfield CDC                          | • Henry Ford Allegiance Health                                     | • Hope Shelter                               | • Development Centers                          | • Barry County Community Mental Health Authority                            |  |
| • Lifeways Community Mental Health            | • Henry Ford Allegiance Health                                     | • Jewish Family Service of Metro Detroit     | • DTE  | • Cinnaire Solutions  |  |
| • Michigan Nonprofit Association              | • Jackson Collaborative Network                                    | • JFS Washtenaw County                       | • Habitat for Humanity of Huron Valley         | • Detroit Public Library  |  |
| • National Council on Aging                   | • The Woodbury Group   | • MCA  | • Jewish Family Services                       | • District Health Department # 10   |  |
| • NEMCSA                                      | • University of Michigan Center for Health Research Transformation | • NKFM                                       | • Lakeshore Regional Entity                    | • Eaton Community Health  |  |
| • Portage Health Foundation                   | • Michigan Chapter of HIMSS  | • Secondchance 2000 CDC                      | • Michigan Medicine                            | • Grace Guild of Sinai-Grace Hospital and Community Development Corporation |  |
| • Starfish Family Services                    | • Northern Michigan Community Connections                          | • The Senior Alliance                        | • National Kidney Foundation of Michigan       | • HSCB  |  |
| • United Way for Southeastern Michigan        | • MPH  | • United Way for Southeastern Michigan       | • Northwest Michigan CHIR                      | • Jewish Family Services of Washtenaw County                                |  |
| • UPCAP Services, Inc.                        | • MedNetOne  | • UPHCS - UPHIE - UPHP                       |  |   |  |
| • Washtenaw Area Council for                  |  | • Washtenaw Health Plan                      |  |   |  |





# What goes into your health?

Social determinants of health have tremendous affect on an individual's health regardless of age, race, or ethnicity.

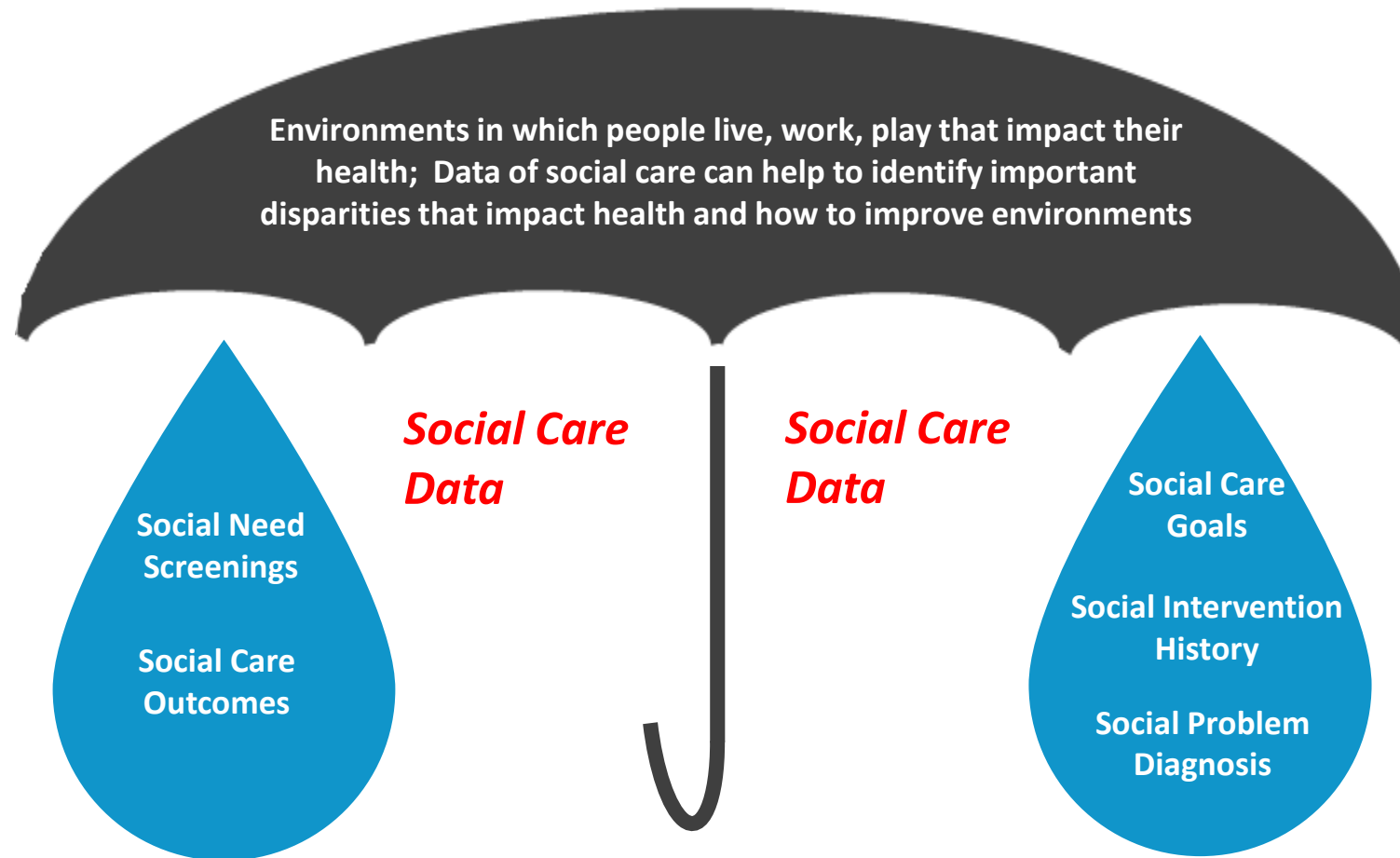


## ➤ SDOH Impact

- ➔ **20 percent** of a person's health and well-being is related to **access to care and quality of services**
- ➔ The physical environment, social determinants and behavioral factors drive **80 percent** of health outcomes

Source: Institute for Clinical Systems Improvement; Going Beyond Clinical Walls: Solving Complex Problems, 2014. Graphic designed by ProMedica.

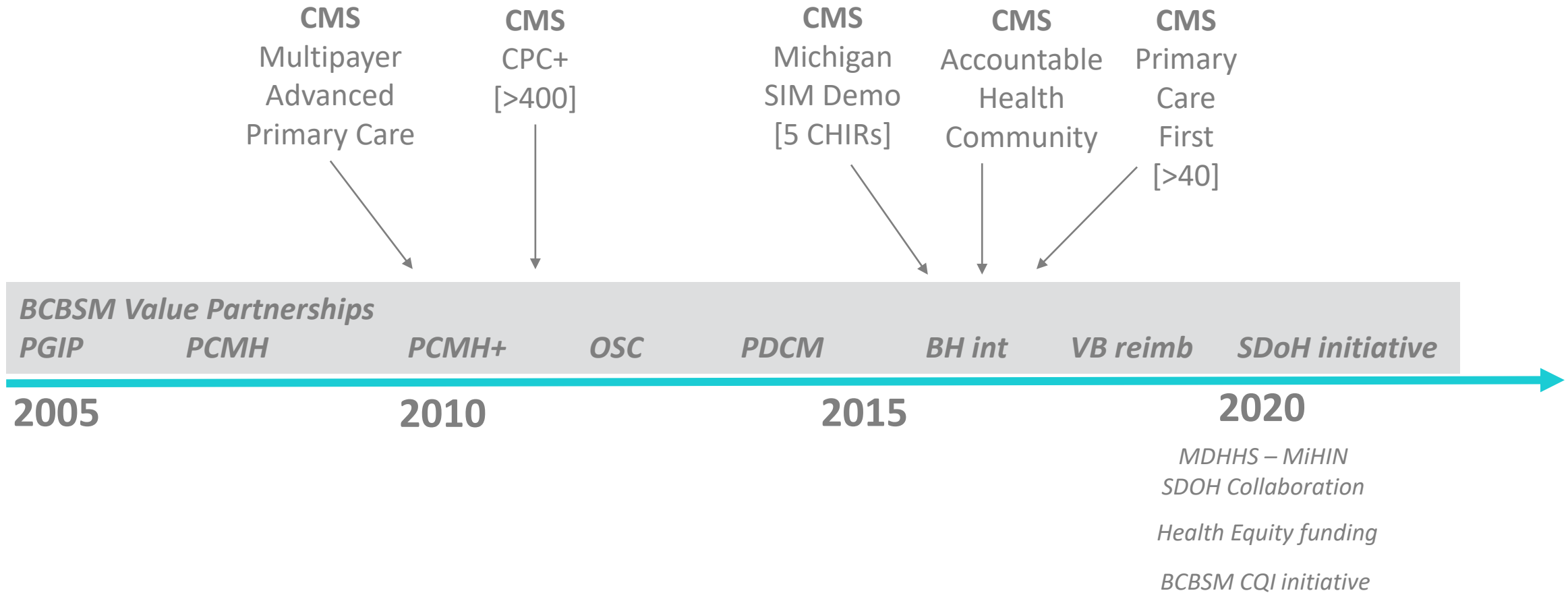
# Social Determinants of Health:





# Social Data and Care in Michigan

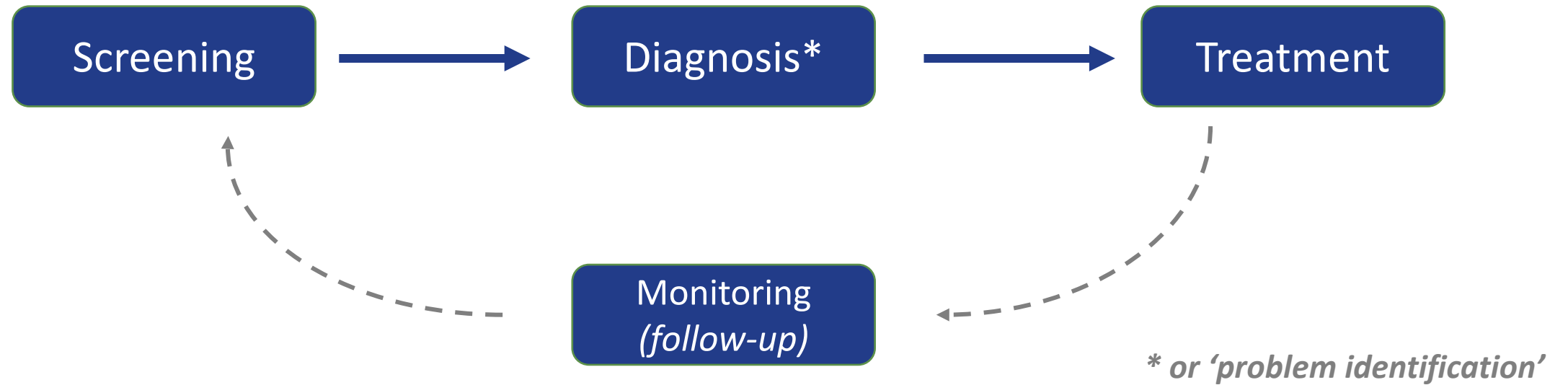
## 2005-present



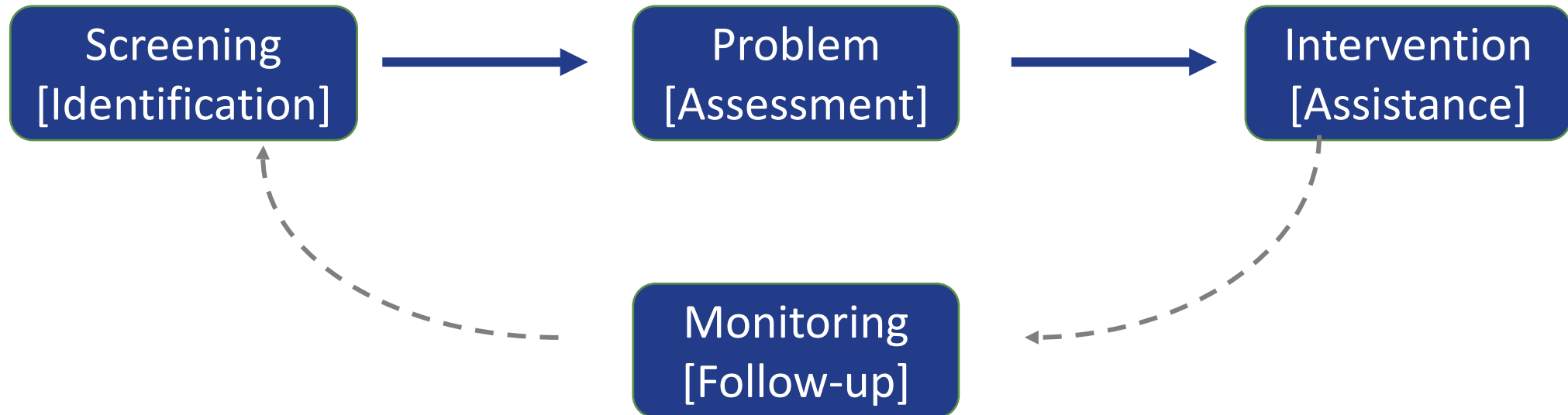
# Pandemic Impact



# General care model



# General care model *using community terms*



# General Care Model *for social care*

## *Can occur through:*

- Client-initiated screening
- CBO screening
- Medical care screening
- Behavioral health screening

Screening



## *Usually occurs through:*

- CBO assessment
- Medical care assessment

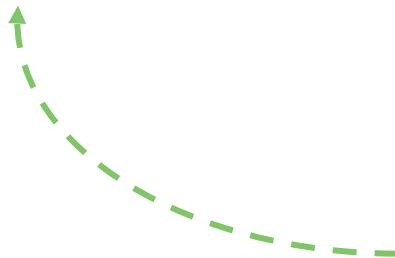
Diagnosis  
Problem ID



## *Usually occurs through:*

- CBO intervention

Treatment  
Intervention



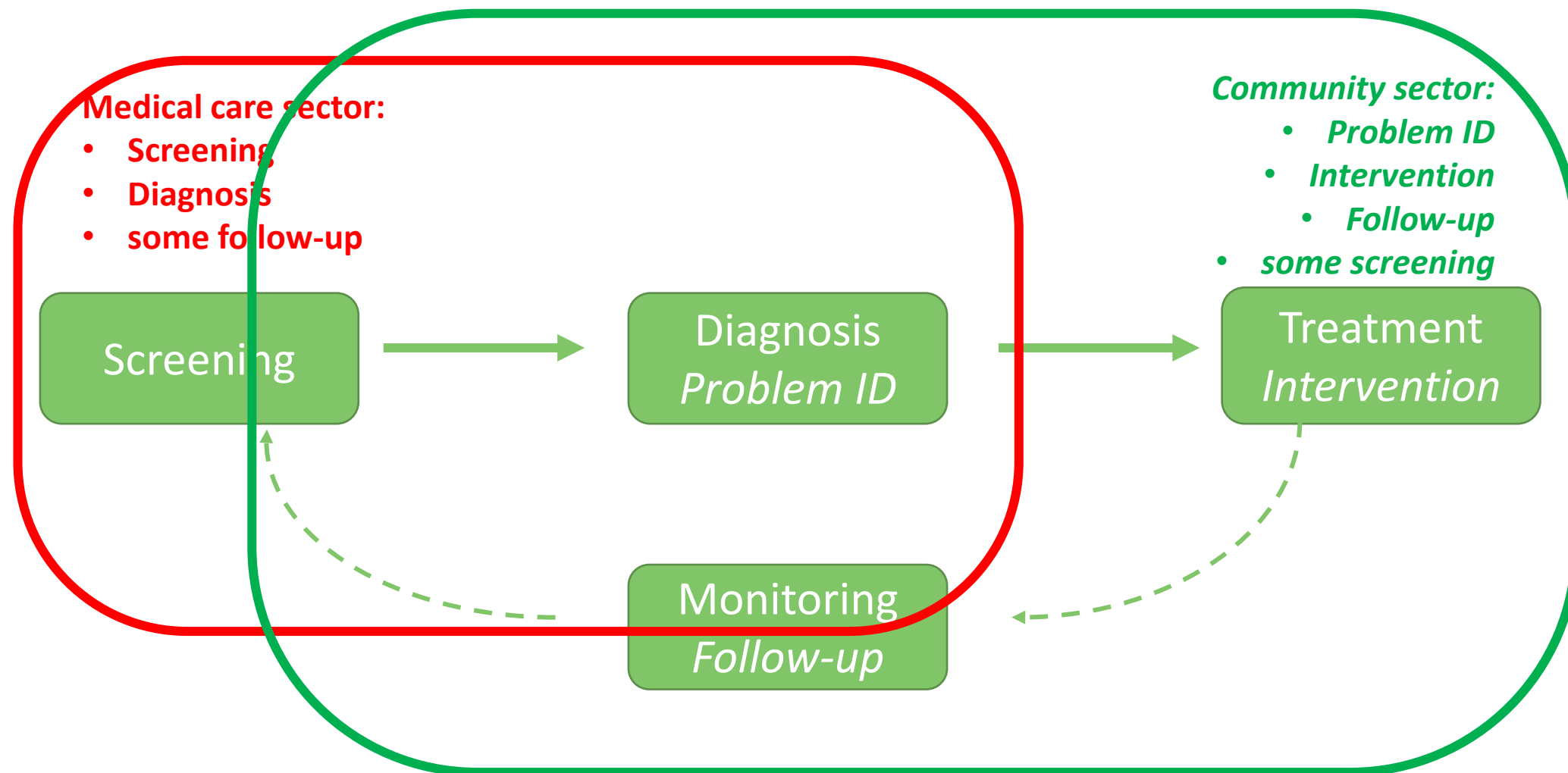
Monitoring  
(*follow-up*)

## *Can occur through:*

- CBO reassessment
- Medical care referral status tracking
- [plus third-party review and analysis]



# Cross-Sector Care in social care







## **Facilitated Discussions:**

- 1. Collection and sharing of social care data**
- 2. Referring individuals in need. Workflow and process**
- 3. Organizational capacity**

# Breakout Room Instructions

- PLEASE use this opportunity to BE HEARD and SPEAK UP
- 5 Facilitated Breakout Rooms
- Transferred Automatically
- If you have any problems with connectivity, please contact: Katy Lewis [Katelyn.lewis@mihin.org](mailto:Katelyn.lewis@mihin.org) or 734-626-4375



# Collection and sharing of social care data

## Questions:

1. Does your organization collect social care data?
2. Is the social care data in a format that can be shared with collaborative partners or funders or other people in the client's world?
3. Top two challenges and top two opportunities?



# Referring individuals in need. Workflow and Process

## Questions:

1. How do people find their way to you? Do you know who refers them to you?
2. Do you refer people to other organizations? What are the challenges in making those referrals?
3. When you work with referrals--Does your organization work with or receive referrals through technological systems?



# Organizational Capacity

## Questions:

1. Does your organization think about how you might be able to use your own information—screening, assessments, referrals and service provision—to benefit the organization?
2. Are there organizational capacity issues that keep you from being able to engage in more advanced data collection?

# Summary and Next Steps:



Where does the work  
need to go next?

What is the next best  
step from your  
perspective?





**Thank you!**

**The MiHIN SDOH Team**

[Lisa.Nicolaou@mihin.org](mailto:Lisa.Nicolaou@mihin.org)