



# HOLON INSTALLATION GUIDE

## Holon App

Version 02

June 2024

# Table of Contents

- Overview ..... 2
- Instructions ..... 2
  - 01 Download the Holon app ..... 2
  - 02 Install the Holon app ..... 3
  - 03 Initial sign in ..... 5
- Uninstalling ..... 7

# Overview

In this guide, you will learn how to download and install the Holon app and validate patient data.

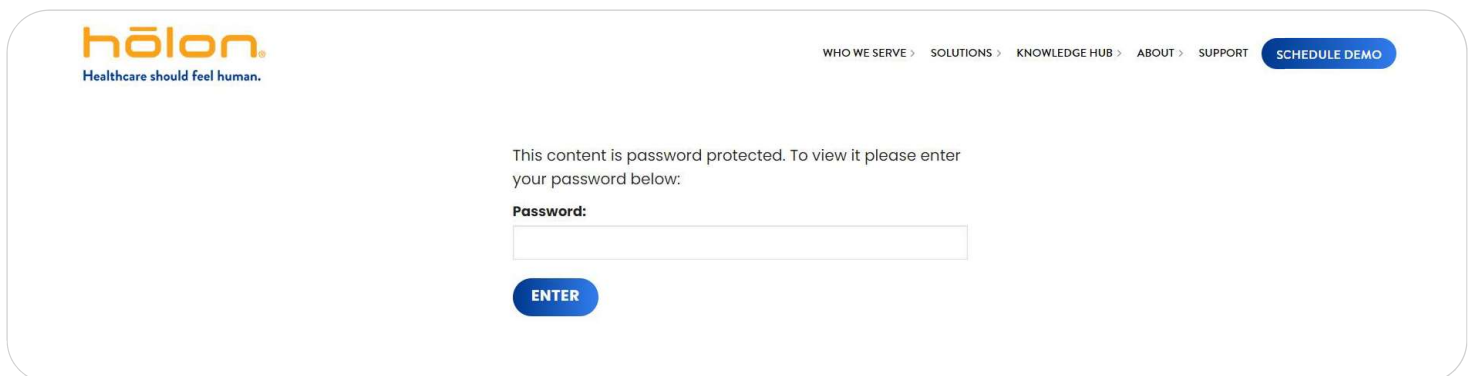
## Instructions

### 01 Download the Holon app

Download the Holon app file from the link below and enter the provided password.

Download link <https://www.holonsolutions.com/downloads/release/>

Password **GA2020!**



The screenshot shows the Holon website header with the logo and navigation links. The main content area displays a message: "This content is password protected. To view it please enter your password below:". Below this message is a text input field labeled "Password:" and a blue "ENTER" button.

Select the version best suited for your device. We recommend selecting the **Windows 64-bit EXE** version.

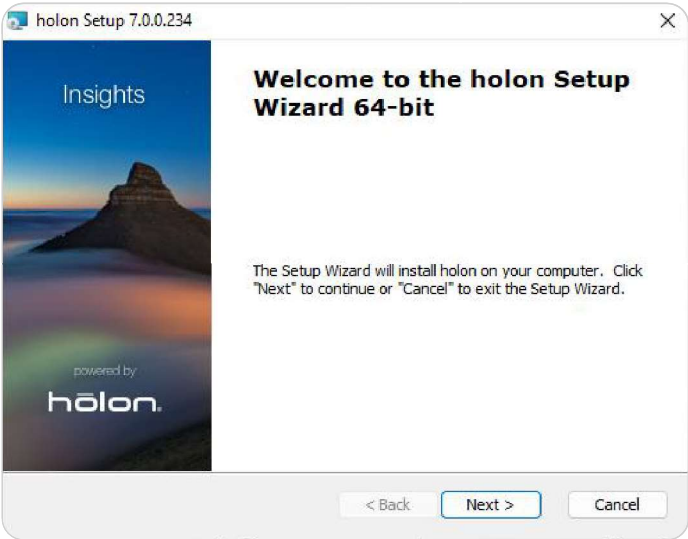


The screenshot shows the Holon website header. Below the header, the "Holon Community" section is visible. It lists "Holon App Version 7" with two options: "Windows 64 bit EXE" (highlighted with a red circle) and "Windows 64 bit MSI". Below these, "Holon Sensor" and "Chrome extension" are listed.

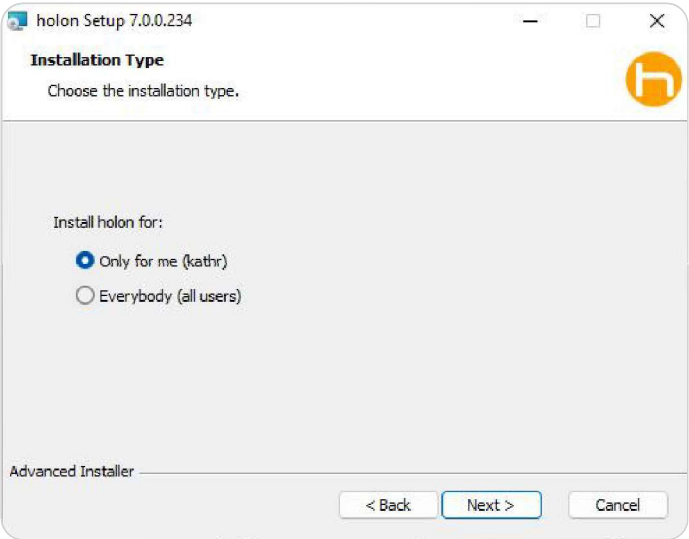
## 02 Install the Holon app

Once download is complete, open the Holon app file and follow the installation steps on your device.

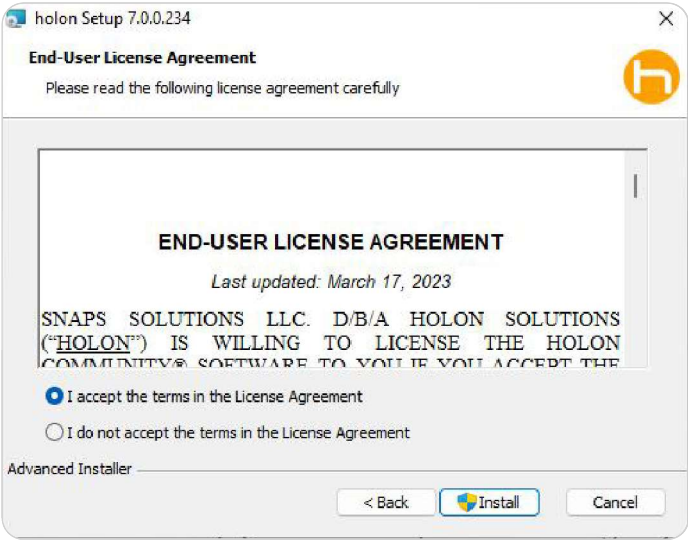
**A** Click **Next**.



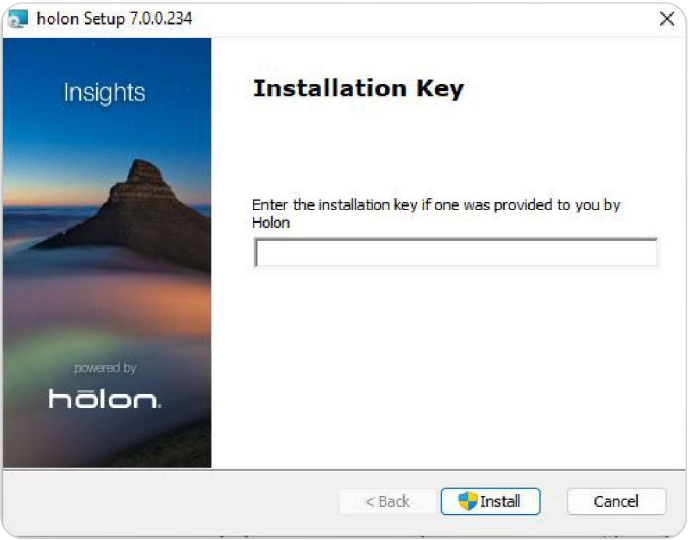
**B** Select **Only for me**. Click **Next**.



**C** Click **I accept** on the end-user-license agreement, then **Install**.

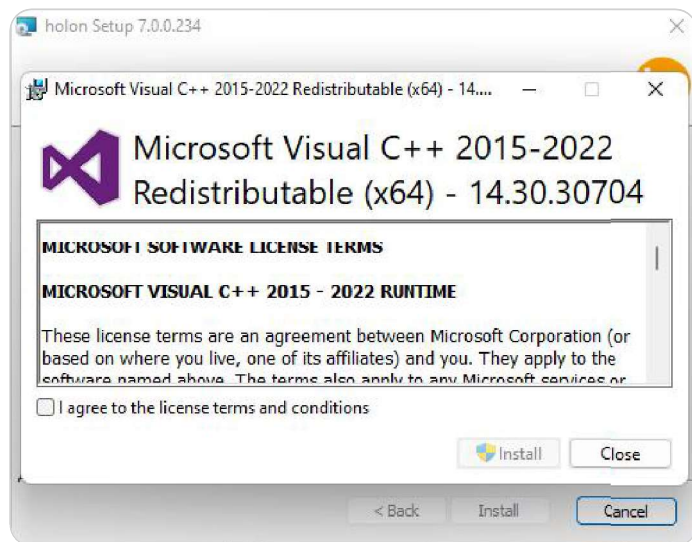


**D** You **do not need** an installation key to install. Click **Install**.

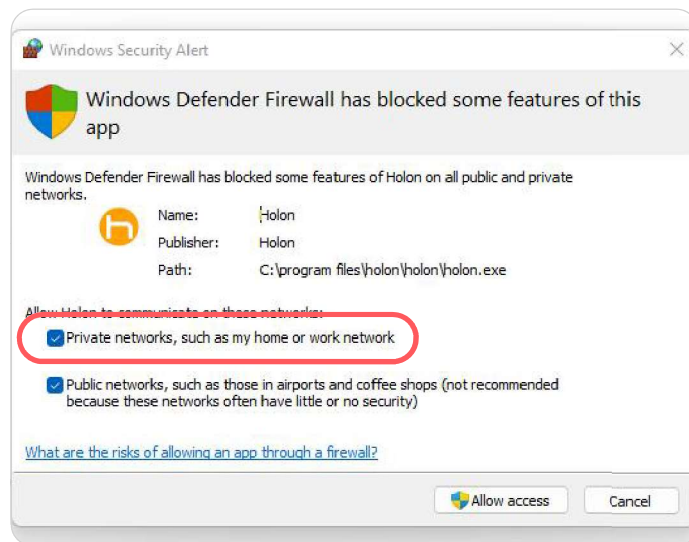


## 02 Install the Holon app (continued)

**E** You may see a Microsoft Visual C++ popup. If so, please agree to the terms & conditions and click **Install**.



**F** You may see a Windows Firewall popup. If so, please select the **Private networks** option and click **Allow access**.



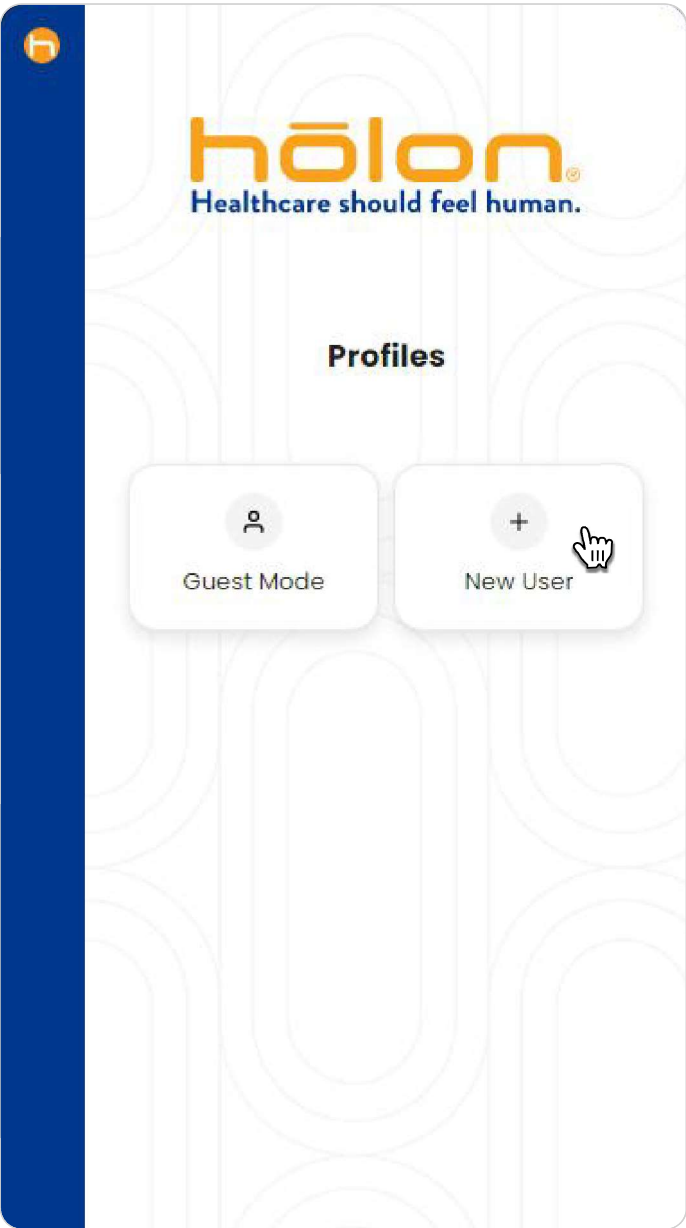
Once the installation is complete, click the **Holon** icon located on your desktop and open the app.



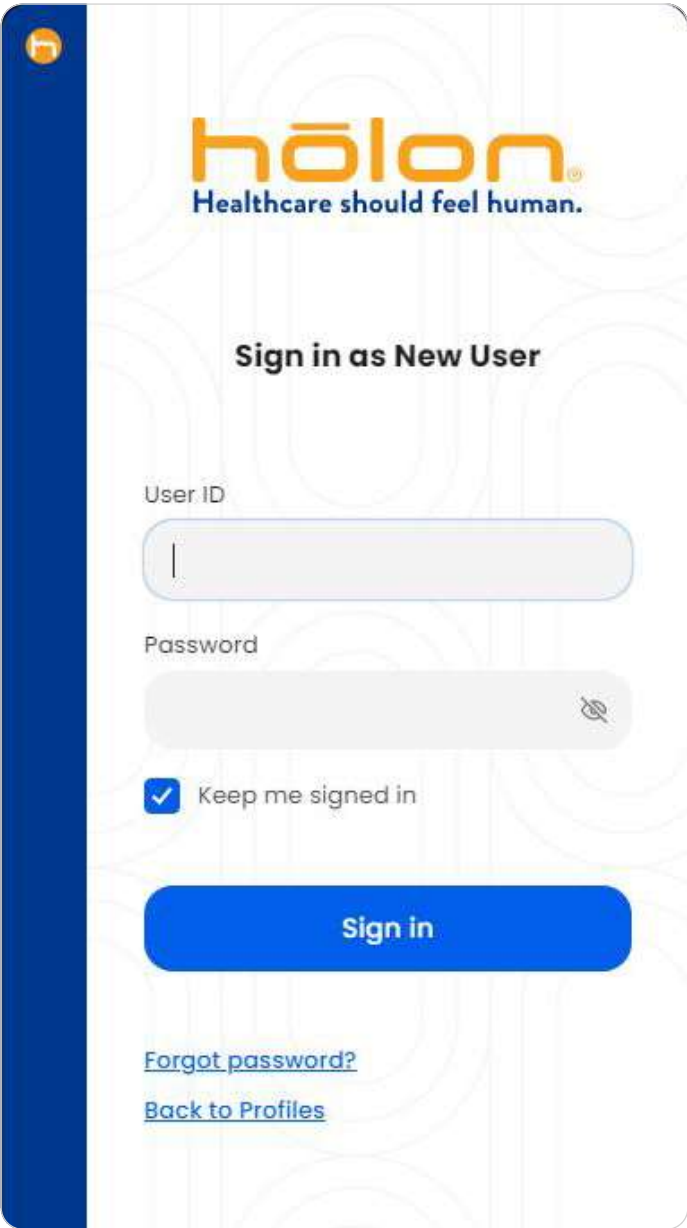
### 03 Initial sign In

Sign into the Holon app for the first time.

**A** Sign in by clicking **New User**.




**B** Enter your **User ID** (email address) and **temporary password** provided in your welcome email.



### 03 Validate Patient Data (continued)

**C** Check **Keep me signed in** if you'd like to stay signed into this profile. Click **Sign in**.



hōlon

Healthcare should feel human.

Sign in as New User

User ID

Password


☒ Keep me signed in

Sign in

[Forgot password?](#)

[Back to Profiles](#)


**D** Enter your **new password**. Click **Update password**. You will automatically be signed in.



hōlon

Healthcare should feel human.

Reset Your Password



Password requirements:

- At least 8 characters
- A lowercase letter
- An uppercase letter
- A number
- No parts of your username
- Your password cannot be any of your last 4 passwords

New password

Re-enter password

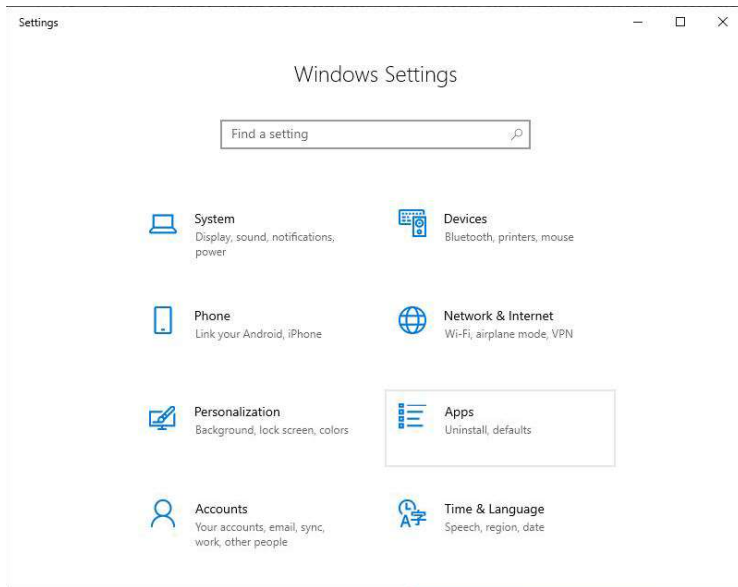
Update password

[Cancel](#)

# Uninstalling

**A** To uninstall the Holon app:

- Navigate to your device's settings
- Click on **Apps**
- Locate the **Holon app**
- Delete the **Holon app**



If you have any issues uninstalling the Holon app from your device, please submit a support ticket by filling out the form on the Holon Support website.



Contact Support

<https://www.holonsolutions.com/support/>

